

For Research Use Only

GRPEL1 Polyclonal antibody

Catalog Number: 12720-1-AP **3 Publications**



Basic Information

Catalog Number: 12720-1-AP	GenBank Accession Number: BC024242	Purification Method: Antigen affinity purification
Size: 150ul , Concentration: 500 µg/ml by Nanodrop and 293 µg/ml by Bradford method using BSA as the standard;	GeneID (NCBI): 80273	Recommended Dilutions: WB 1:5000-1:50000 IP 0.5-4.0 ug for IP and 1:5000-1:50000 for WB
Source: Rabbit	Full Name: GrpE-like 1, mitochondrial (E. coli)	IHC 1:20-1:200 IF 1:10-1:100
Isotype: IgG	Calculated MW: 217 aa, 24 kDa	
Immunogen Catalog Number: AG3415	Observed MW: 24 kDa	

Applications

Tested Applications: IF, IHC, IP, WB, ELISA	Positive Controls: WB : MCF-7 cells, HEK-293T cells IP : MCF-7 cells, IHC : human colon cancer tissue, IF : HepG2 cells,
Cited Applications: WB	
Species Specificity: human, mouse, rat	
Cited Species: human	
Note-IHC: suggested antigen retrieval with TE buffer pH 9.0; (*) Alternatively, antigen retrieval may be performed with citrate buffer pH 6.0	

Background Information

Notable Publications

Author	Pubmed ID	Journal	Application
Jonas Benjamin Michaelis	36056001	Nat Commun	WB
Pingbo Chen	31636012	EBioMedicine	WB
Chun-Shik Shin	33431889	Nat Commun	WB

Storage

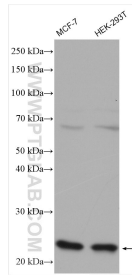
Storage:
Store at -20°C. Stable for one year after shipment.
Storage Buffer:
PBS with 0.02% sodium azide and 50% glycerol pH 7.3.
Aliquoting is unnecessary for -20°C storage

*** 20ul sizes contain 0.1% BSA

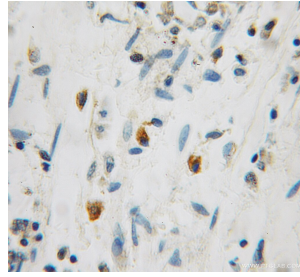
For technical support and original validation data for this product please contact:
T: 1 (888) 4PTGLAB (1-888-478-4522) (toll free in USA), or 1(312) 455-8498 (outside USA)
E: proteintech@ptglab.com
W: ptglab.com

This product is exclusively available under Proteintech Group brand and is not available to purchase from any other manufacturer.

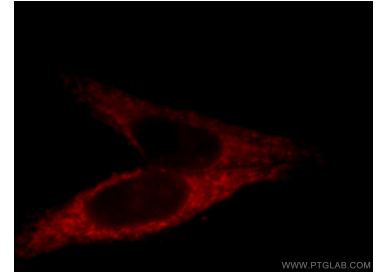
Selected Validation Data



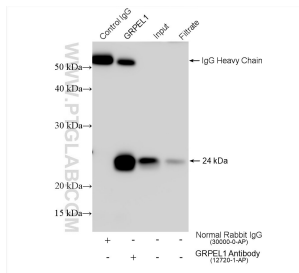
Various lysates were subjected to SDS PAGE followed by western blot with 12720-1-AP (GRPEL1 antibody) at dilution of 1:12000 incubated at room temperature for 1.5 hours.



Immunohistochemical analysis of paraffin-embedded human colon cancer using 12720-1-AP (GRPEL1 antibody) at dilution of 1:100 (under 10x lens).



Immunofluorescent analysis of HepG2 cells, using GRPEL1 antibody 12720-1-AP at 1:25 dilution and Rhodamine-labeled goat anti-rabbit IgG (red).



IP result of anti-GRPEL1(IP:12720-1-AP, 4ug; Detection:12720-1-AP 1:10000) with MCF-7 cells lysate 1000 ug.