

For Research Use Only

CATSPER1 Polyclonal antibody, PBS Only

Catalog Number: 12722-1-PBS



Basic Information

Catalog Number:

12722-1-PBS

Size:

100ug, Concentration: 1 mg/ml by Nanodrop;

Source:

Rabbit

Isotype:

IgG

Immunogen Catalog Number:

AG3417

GenBank Accession Number:

BC032950

GeneID (NCBI):

117144

UNIPROT ID:

Q8NEC5

Full Name:

cation channel, sperm associated 1

Calculated MW:

780 aa, 90 kDa

Observed MW:

90 kDa

Purification Method:

Antigen affinity purification

Applications

Tested Applications:

WB, Indirect ELISA

Species Specificity:

human

Background Information

Cation channel sperm-associated protein 1 (CATSPER1) belongs to a family of four sperm-specific tetrameric voltage-gated cation channels that are highly conserved in humans and mice (PMID: 12402840; 12932298). Definitive evidence that CatSper1 functions as a voltage-gated calcium channel to facilitate hyperactivated sperm motility came from whole-cell patch-clamp measurements of spermatozoa (PMID: 16467839). CATSPER1 channel currents were potentiated in response to intracellular alkalinization, increasing the concentration of intraflagellar calcium and thereby inducing hyperactivity.

Storage

Storage:

Store at -80°C.

Storage Buffer:

PBS only, pH7.3

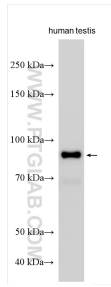
For technical support and original validation data for this product please contact:

T: 1 (888) 4PTGLAB (1-888-478-4522) (toll free in USA), or 1(312) 455-8498 (outside USA)

E: proteintech@ptglab.com
W: ptglab.com

This product is exclusively available under Proteintech Group brand and is not available to purchase from any other manufacturer.

Selected Validation Data



human testis lysates were subjected to SDS PAGE followed by western blot with 12722-1-AP (CATSPER1 antibody) at dilution of 1:500 incubated at room temperature for 1.5 hours. This data was developed using the same antibody clone with 12722-1-PBS in a different storage buffer formulation.