

For Research Use Only

ELL2 Polyclonal antibody, PBS Only

Catalog Number: 12727-1-PBS

Featured Product



Basic Information

Catalog Number:

12727-1-PBS

Size:

100ug, Concentration: 1 mg/ml by Nanodrop;

Source:

Rabbit

Isotype:

IgG

Immunogen Catalog Number:

AG3428

GenBank Accession Number:

BC028412

GeneID (NCBI):

22936

UNIPROT ID:

O00472

Full Name:

elongation factor, RNA polymerase II,
2

Calculated MW:

640 aa, 72 kDa

Observed MW:

72 kDa

Purification Method:

Antigen affinity purification

Applications

Tested Applications:

WB, IP, Indirect ELISA

Species Specificity:

human, mouse, rat

Background Information

ELL2 (Elongation Factor for RNA Polymerase II 2) is a key transcriptional elongation factor that regulates RNA polymerase II (Pol II) during mRNA synthesis (PMID: 34265249). It belongs to the ELL gene family, which includes ELL1, ELL2, and ELL3, and plays a crucial role in controlling the elongation phase of transcription (PMID: 9108030). ELL2 is an androgen-responsive gene that is expressed by prostate epithelial cells and is frequently down-regulated in prostate cancer (PMID: 29179998).

Storage

Storage:

Store at -80°C.

Storage Buffer:

PBS only, pH7.3

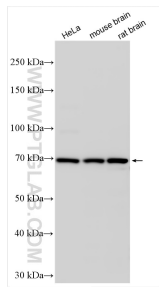
For technical support and original validation data for this product please contact:

T: 1 (888) 4PTGLAB (1-888-478-4522) (toll free in USA), or 1(312) 455-8498 (outside USA)

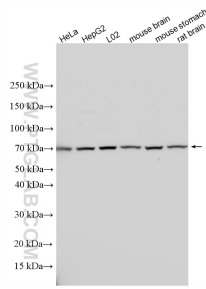
E: proteintech@ptglab.com
W: ptglab.com

This product is exclusively available under Proteintech Group brand and is not available to purchase from any other manufacturer.

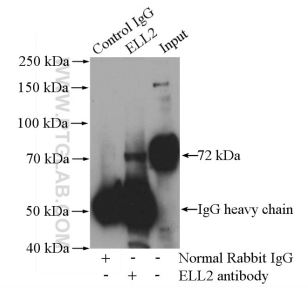
Selected Validation Data



Various lysates were subjected to SDS PAGE followed by western blot with 12727-1-AP (ELL2 antibody) at dilution of 1:1000 incubated at room temperature for 1.5 hours. This data was developed using the same antibody clone with 12727-1-PBS in a different storage buffer formulation.



Various lysates were subjected to SDS PAGE followed by western blot with 12727-1-AP (ELL2 antibody) at dilution of 1:1500 incubated at room temperature for 1.5 hours. This data was developed using the same antibody clone with 12727-1-PBS in a different storage buffer formulation.



IP result of anti-ELL2 (IP:12727-1-AP, 4ug; Detection:12727-1-AP 1:300) with mouse brain tissue lysate 3440ug. This data was developed using the same antibody clone with 12727-1-PBS in a different storage buffer formulation.