

For Research Use Only

RabGEF1 Polyclonal antibody

Catalog Number: 12735-1-AP

Featured Product

6 Publications



Basic Information

Catalog Number:

12735-1-AP

Size:

150ul, Concentration: 400 ug/ml by Nanodrop and 133 ug/ml by Bradford method using BSA as the standard;

Source:

Rabbit

Isotype:

IgG

Immunogen Catalog Number:

AG3442

GenBank Accession Number:

BC015330

GeneID (NCBI):

27342

UNIPROT ID:

Q9UJ41

Full Name:

RAB guanine nucleotide exchange factor (GEF) 1

Calculated MW:

57 kDa

Observed MW:

60 kDa

Purification Method:

Antigen affinity purification

Recommended Dilutions:

WB 1:500-1:1000

IHC 1:20-1:200

IF/ICC 1:10-1:100

Applications

Tested Applications:

WB, IHC, IF/ICC, ELISA

Cited Applications:

WB, IF

Species Specificity:

human, mouse, rat

Cited Species:

human, mouse, rat

Note-IHC: suggested antigen retrieval with TE buffer pH 9.0; (*) Alternatively, antigen retrieval may be performed with citrate buffer pH 6.0

Positive Controls:

WB: PC-3 cells,

IHC: human endometrial cancer tissue,

IF/ICC: PC-3 cells,

Background Information

RabGEF1 (Rabex-5) is a guanine nucleotide exchange factor (GEF) for the endocytic pathway regulator Rab5. RabGEF1 contains a Vps9 domain, an A20-like zinc finger (ZnF) domain, and a coiled coil domain (PMID: 17341663). RabGEF1 is involved in endocytic membrane fusion and membrane trafficking of recycling endosomes. It is also implicated in tumorigenesis and in the development of certain human cancers (PMID: 25427001).

Notable Publications

Author	Pubmed ID	Journal	Application
Yangfei Yi	36178080	Orthop Surg	WB
Haitao Fan	33166495	Exp Mol Pathol	WB
Ernes Candiello	27411398	Sci Rep	IF

Storage

Storage:

Store at -20°C. Stable for one year after shipment.

Storage Buffer:

PBS with 0.02% sodium azide and 50% glycerol pH 7.3.

Aliquoting is unnecessary for -20°C storage

*** 20ul sizes contain 0.1% BSA

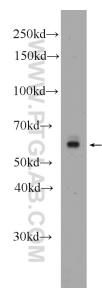
For technical support and original validation data for this product please contact:

T: 1 (888) 4PTGLAB (1-888-478-4522) (toll free in USA), or 1(312) 455-8498 (outside USA)

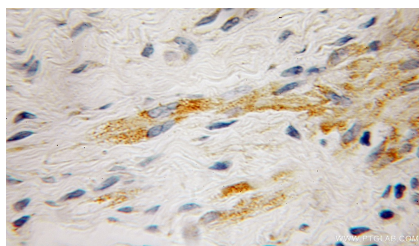
E: proteintech@ptglab.com
W: ptglab.com

This product is exclusively available under Proteintech Group brand and is not available to purchase from any other manufacturer.

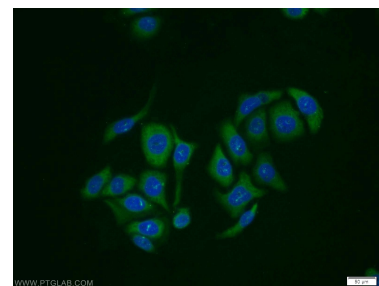
Selected Validation Data



PC-3 cells were subjected to SDS PAGE followed by western blot with 12735-1-AP (RABGEF1 Antibody) at dilution of 1:600 incubated at room temperature for 1.5 hours.



Immunohistochemical analysis of paraffin-embedded human endometrial cancer using 12735-1-AP (RABGEF1 antibody) at dilution of 1:100 (under 10x lens).



Immunofluorescent analysis of PC-3 cells using 12735-1-AP (RabGEF1 antibody) at dilution of 1:25 and Alexa Fluor 488-conjugated Goat Anti-Rabbit IgG(H+L).