

For Research Use Only

# ZFP36 Polyclonal antibody, PBS Only

Catalog Number:12737-1-PBS



## Basic Information

**Catalog Number:**

12737-1-PBS

**Size:**

100ug, Concentration: 1 mg/ml by Nanodrop;

**Source:**

Rabbit

**Isotype:**

IgG

**Immunogen Catalog Number:**

AG3461

**GenBank Accession Number:**

BC009693

**GeneID (NCBI):**

7538

**UNIPROT ID:**

P26651

**Full Name:**

zinc finger protein 36, C3H type, homolog (mouse)

**Calculated MW:**

326 aa, 34 kDa

**Observed MW:**

37-44 kDa

**Purification Method:**

Antigen affinity purification

## Applications

**Tested Applications:**

WB, IHC, IF/ICC, Indirect ELISA

**Species Specificity:**

human, mouse, rat

## Background Information

The expression of many cytokines is regulated post-transcriptionally by factors that modulate mRNA transport, translation, and stability. Much of this regulation occurs by the binding and stabilizing, or destabilizing, of cytokine mRNAs by proteins that recognize adenosine and uridine-rich elements (AREs) in untranslated regions of target transcripts. Zfp36 is a mRNA-binding protein involved in post-transcriptional regulation of AU-rich element (ARE)-containing mRNAs. It was demonstrated to physically interact with the p65 subunit of nuclear factor- $\kappa$ B leading to decreased nuclear import and diminished transcriptional activation mediated by nuclear factor- $\kappa$ B. It acted by specifically binding ARE-containing mRNAs and promoting their degradation, and has a crucial role in the post-transcriptional regulation of tumor necrosis factor (TNF). The calculated molecular weight of ZFP36 is 34 kDa, but modified ZFP36 is about 40-45 kDa.

## Storage

**Storage:**

Store at -80°C.

**Storage Buffer:**

PBS Only

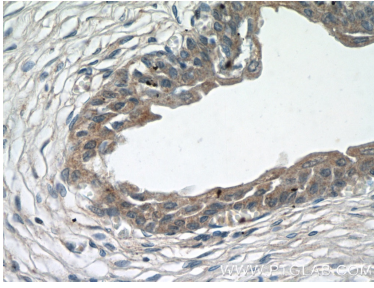
For technical support and original validation data for this product please contact:

T: 1 (888) 4PTGLAB (1-888-478-4522) (toll free in USA), or 1(312) 455-8498 (outside USA)

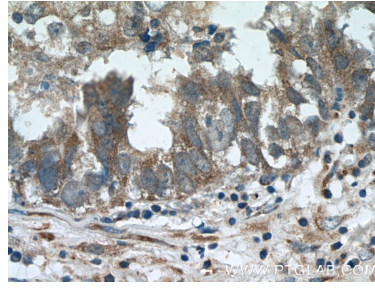
E: [proteintech@ptglab.com](mailto:proteintech@ptglab.com)  
W: [ptglab.com](http://ptglab.com)

**This product is exclusively available under Proteintech Group brand and is not available to purchase from any other manufacturer.**

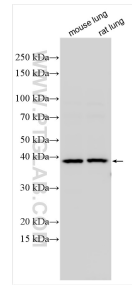
## Selected Validation Data



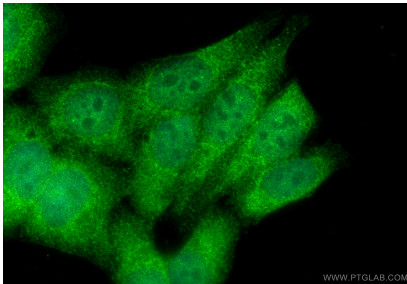
Immunohistochemical analysis of paraffin-embedded human bladder tissue slide using 12737-1-AP (ZFP36 Antibody) at dilution of 1:50 (under 40x lens). This data was developed using the same antibody clone with 12737-1-PBS in a different storage buffer formulation.



Immunohistochemical analysis of paraffin-embedded human breast cancer tissue slide using 12737-1-AP (ZFP36 Antibody) at dilution of 1:50 (under 40x lens). This data was developed using the same antibody clone with 12737-1-PBS in a different storage buffer formulation.



Various lysates were subjected to SDS PAGE followed by western blot with 12737-1-AP (ZFP36 antibody) at dilution of 1:1500 incubated at room temperature for 1.5 hours. This data was developed using the same antibody clone with 12737-1-PBS in a different storage buffer formulation.



Immunofluorescent analysis of (4% PFA) fixed HepG2 cells using ZFP36 antibody (12737-1-AP) at dilution of 1:200 and Multi-rAb Coralite® Plus 488-Goat Anti-Rabbit Recombinant Secondary Antibody (H+L) (RGAR002). This data was developed using the same antibody clone with 12737-1-PBS in a different storage buffer formulation.