

For Research Use Only

Collagen Type XXV Polyclonal antibody



Catalog Number: 12738-1-AP

Basic Information

Catalog Number: 12738-1-AP	GenBank Accession Number: BC036669	Purification Method: Antigen affinity purification
Size: 150ul , Concentration: 200 µg/ml by Nanodrop and 160 µg/ml by Bradford method using BSA as the standard;	GeneID (NCBI): 84570	Recommended Dilutions: WB 1:500-1:1000
Source: Rabbit	Full Name: collagen, type XXV, alpha 1	
Isotype: IgG	Calculated MW: 65 kDa	
Immunogen Catalog Number: AG3634	Observed MW: 55 kDa	

Applications

Tested Applications: WB, ELISA	Positive Controls: WB : mouse brain tissue, rat brain tissue
Species Specificity: human, mouse, rat	

Background Information

Collagen alpha-1(XXV) chain is a protein that in humans is encoded by the COL25A1 gene. COL25A1 is a brain-specific membrane-bound collagen. Proteolytic processing releases CLAC, a soluble form of COL25A1 containing the extracellular collagen domains that associates with senile plaques in Alzheimer disease brains.(PMID: 11927537)

Storage

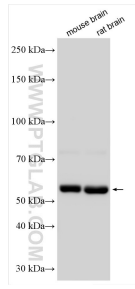
Storage:
Store at -20°C. Stable for one year after shipment.
Storage Buffer:
PBS with 0.02% sodium azide and 50% glycerol pH 7.3.
Aliquoting is unnecessary for -20°C storage

*** 20ul sizes contain 0.1% BSA

For technical support and original validation data for this product please contact:
T: 1 (888) 4PTGLAB (1-888-478-4522) (toll free in USA), or 1(312) 455-8498 (outside USA) E: proteintech@ptglab.com W: ptglab.com

This product is exclusively available under Proteintech Group brand and is not available to purchase from any other manufacturer.

Selected Validation Data



Various lysates were subjected to SDS PAGE followed by western blot with 12738-1-AP (Collagen Type XXV antibody) at dilution of 1:500 incubated at room temperature for 1.5 hours.