

For Research Use Only

# Collagen Type XXV Polyclonal antibody, PBS Only

Catalog Number: 12738-1-PBS



## Basic Information

<b>Catalog Number:</b> 12738-1-PBS	<b>GenBank Accession Number:</b> BC036669	<b>Purification Method:</b> Antigen affinity purification
<b>Size:</b> 100ug , Concentration: 1 mg/ml by Nanodrop;	<b>GeneID (NCBI):</b> 84570	
<b>Source:</b> Rabbit	<b>UNIPROT ID:</b> Q9BXSO	
<b>Isotype:</b> IgG	<b>Full Name:</b> collagen, type XXV, alpha 1	
<b>Immunogen Catalog Number:</b> AG3634	<b>Calculated MW:</b> 65 kDa	
	<b>Observed MW:</b> 55 kDa	

## Applications

**Tested Applications:**  
WB, IF/ICC, Indirect ELISA

**Species Specificity:**  
human, mouse, rat

## Background Information

Collagen alpha-1(XXV) chain is a protein that in humans is encoded by the COL25A1 gene. COL25A1 is a brain-specific membrane-bound collagen. Proteolytic processing releases CLAC, a soluble form of COL25A1 containing the extracellular collagen domains that associates with senile plaques in Alzheimer disease brains.(PMID: 11927537)

## Storage

**Storage:**  
Store at -80°C.  
**Storage Buffer:**  
PBS only, pH7.3

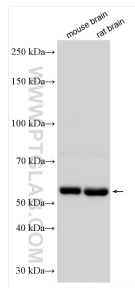
For technical support and original validation data for this product please contact:

T: 1 (888) 4PTGLAB (1-888-478-4522) (toll free  
in USA), or 1(312) 455-8498 (outside USA)

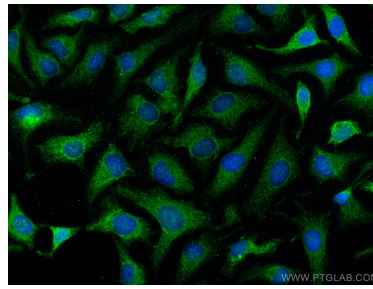
E: [proteintech@ptglab.com](mailto:proteintech@ptglab.com)  
W: [ptglab.com](http://ptglab.com)

**This product is exclusively available under Proteintech Group brand and is not available to purchase from any other manufacturer.**

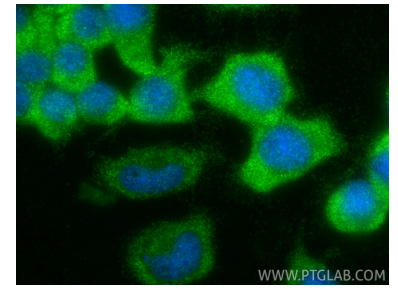
## Selected Validation Data



Various lysates were subjected to SDS PAGE followed by western blot with 12738-1-AP (Collagen Type XXV antibody) at dilution of 1:500 incubated at room temperature for 1.5 hours. This data was developed using the same antibody clone with 12738-1-PBS in a different storage buffer formulation.



Immunofluorescent analysis of (4% PFA) fixed HeLa cells using Collagen Type XXV antibody (12738-1-AP) at dilution of 1:200 and CoraLite®488-Conjugated AffiniPure Goat Anti-Rabbit IgG(H+L). This data was developed using the same antibody clone with 12738-1-PBS in a different storage buffer formulation.



Immunofluorescent analysis of (-20°C Ethanol) fixed Neuro-2a cells using Collagen Type XXV antibody (12738-1-AP) at dilution of 1:400 and CoraLite®488-Conjugated Goat Anti-Rabbit IgG(H+L) (SA00013-2). This data was developed using the same antibody clone with 12738-1-PBS in a different storage buffer formulation.