

For Research Use Only

ORC2L Polyclonal antibody

Catalog Number:12739-1-AP



Basic Information

Catalog Number:

12739-1-AP

Size:

150ul , Concentration: 450 ug/ml by Nanodrop and 187 ug/ml by Bradford method using BSA as the standard;

Source:

Rabbit

Isotype:

IgG

Immunogen Catalog Number:

AG3635

GenBank Accession Number:

BC014834

GeneID (NCBI):

4999

UNIPROT ID:

Q13416

Full Name:

origin recognition complex, subunit 2-like (yeast)

Calculated MW:

577 aa, 66 kDa

Observed MW:

70-74 kDa

Purification Method:

Antigen affinity purification

Recommended Dilutions:

WB 1:500-1:2400

IP 0.5-4.0 ug for 1.0-3.0 mg of total protein lysate

Applications

Tested Applications:

WB, IP, ELISA

Species Specificity:

human, mouse, rat

Positive Controls:

WB : HepG2 cells,

IP : HepG2 cells,

Storage

Storage:

Store at -20°C. Stable for one year after shipment.

Storage Buffer:

PBS with 0.02% sodium azide and 50% glycerol pH 7.3.

Aliquoting is unnecessary for -20°C storage

*** 20ul sizes contain 0.1% BSA

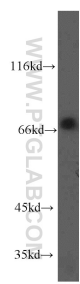
For technical support and original validation data for this product please contact:

T: 1 (888) 4PTGLAB (1-888-478-4522) (toll free in USA), or 1(312) 455-8498 (outside USA)

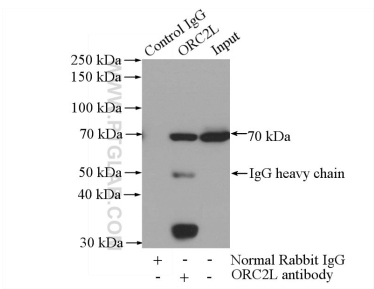
E: proteintech@ptglab.com
W: ptglab.com

This product is exclusively available under Proteintech Group brand and is not available to purchase from any other manufacturer.

Selected Validation Data



HepG2 cells were subjected to SDS PAGE followed by western blot with 12739-1-AP (ORC2L antibody) at dilution of 1:500 incubated at room temperature for 1.5 hours.



IP result of anti-ORC2L (IP:12739-1-AP, 4ug; Detection:12739-1-AP 1:300) with HepG2 cells lysate 1200ug.