

For Research Use Only

NET1 Polyclonal antibody

Catalog Number: 12740-1-AP

1 Publications



Basic Information

Catalog Number: 12740-1-AP	GenBank Accession Number: BC010285	Purification Method: Antigen affinity purification
Size: 150ul , Concentration: 850 ug/ml by Nanodrop;	GeneID (NCBI): 10276	Recommended Dilutions: WB 1:500-1:1000
Source: Rabbit	UNIPROT ID: Q7Z628	IHC 1:50-1:500
Isotype: IgG	Full Name: neuroepithelial cell transforming 1	IF/ICC 1:200-1:800
Immunogen Catalog Number: AG3636	Calculated MW: 596 aa, 68 kDa	
	Observed MW: 68 kDa	

Applications

Tested Applications: WB, IHC, IF/ICC, ELISA	Positive Controls:
Cited Applications: IHC	WB : Y79 cells,
Species Specificity: human, mouse	IHC : human stomach tissue,
Cited Species: human	IF/ICC : A431 cells,
Note-IHC: suggested antigen retrieval with TE buffer pH 9.0; (*) Alternatively, antigen retrieval may be performed with citrate buffer pH 6.0	

Notable Publications

Author	Pubmed ID	Journal	Application
Yuting Zhang	28511963	Hum Pathol	IHC

Storage

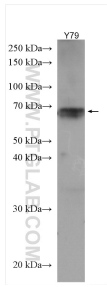
Storage:
Store at -20°C. Stable for one year after shipment.
Storage Buffer:
PBS with 0.02% sodium azide and 50% glycerol pH 7.3.
Aliquoting is unnecessary for -20°C storage

*** 20ul sizes contain 0.1% BSA

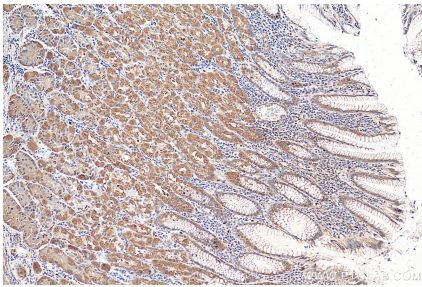
For technical support and original validation data for this product please contact:
T: 1 (888) 4PTGLAB (1-888-478-4522) (toll free in USA), or 1(312) 455-8498 (outside USA)
E: proteintech@ptglab.com
W: ptglab.com

This product is exclusively available under Proteintech Group brand and is not available to purchase from any other manufacturer.

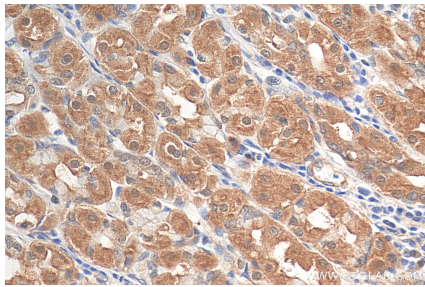
Selected Validation Data



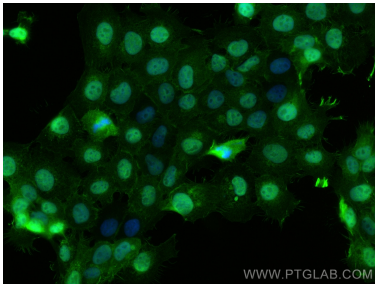
Y79 cells were subjected to SDS PAGE followed by western blot with 12740-1-AP (NET1 antibody) at dilution of 1:600 incubated at room temperature for 1.5 hours.



Immunohistochemical analysis of paraffin-embedded human stomach tissue slide using 12740-1-AP (NET1 antibody) at dilution of 1:200 (under 10x lens).



Immunohistochemical analysis of paraffin-embedded human stomach tissue slide using 12740-1-AP (NET1 antibody) at dilution of 1:200 (under 40x lens).



Immunofluorescent analysis of (4% PFA) fixed A431 cells using NET1 antibody (12740-1-AP) at dilution of 1:400 and Coralite®488-Conjugated Goat Anti-Rabbit IgG(H+L).