

## MEK6 Polyclonal antibody

Catalog Number: 12745-1-AP

4 Publications

## Basic Information

<b>Catalog Number:</b> 12745-1-AP	<b>GenBank Accession Number:</b> BC012009	<b>Purification Method:</b> Antigen affinity purification
<b>Size:</b> 150ul , Concentration: 500 µg/ml by Nanodrop and 300 µg/ml by Bradford method using BSA as the standard;	<b>GeneID (NCBI):</b> 5608	<b>Recommended Dilutions:</b> WB 1:500-1:1000 IHC 1:50-1:500
<b>Source:</b> Rabbit	<b>Full Name:</b> mitogen-activated protein kinase kinase 6	
<b>Isotype:</b> IgG	<b>Calculated MW:</b> 334 aa, 37 kDa	
<b>Immunogen Catalog Number:</b> AG3706	<b>Observed MW:</b> 37 kDa	

## Applications

<b>Tested Applications:</b> FC, IHC, WB, ELISA	<b>Positive Controls:</b> WB : HeLa cells, human kidney tissue IHC : human breast cancer tissue,
<b>Cited Applications:</b> WB	
<b>Species Specificity:</b> human, mouse	
<b>Cited Species:</b> human, mouse	
<b>Note-IHC: suggested antigen retrieval with TE buffer pH 9.0; (*) Alternatively, antigen retrieval may be performed with citrate buffer pH 6.0</b>	

## Background Information

## Notable Publications

Author	Pubmed ID	Journal	Application
Leonardo Pedrazza	31965002	Sci Rep	WB
Kehong Liu	35112126	Food Funct	WB
Ji-Xian Xiong	37814123	Acta Pharmacol Sin	WB

## Storage

**Storage:**  
Store at -20°C. Stable for one year after shipment.

**Storage Buffer:**  
PBS with 0.02% sodium azide and 50% glycerol pH 7.3.

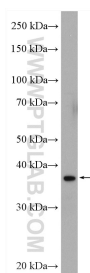
Aliquoting is unnecessary for -20°C storage

\*\*\* 20ul sizes contain 0.1% BSA

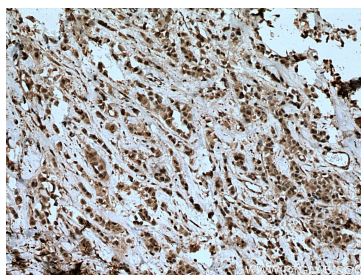
For technical support and original validation data for this product please contact:  
 T: 1 (888) 4PTGLAB (1-888-478-4522) (toll free in USA), or 1(312) 455-8498 (outside USA)  
 E: [proteintech@ptglab.com](mailto:proteintech@ptglab.com)  
 W: [ptglab.com](http://ptglab.com)

This product is exclusively available under Proteintech Group brand and is not available to purchase from any other manufacturer.

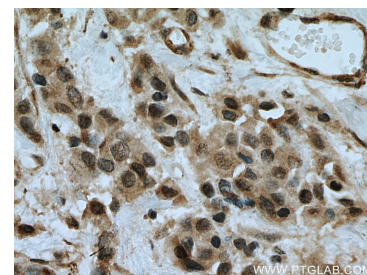
## Selected Validation Data



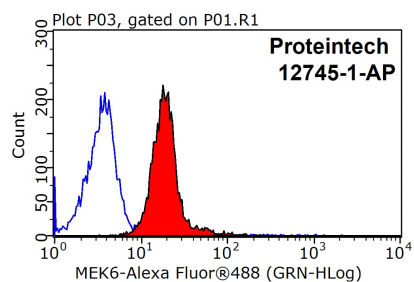
HeLa cells were subjected to SDS PAGE followed by western blot with 12745-1-AP (MEK6 antibody) at dilution of 1:500 incubated at room temperature for 1.5 hours.



Immunohistochemical analysis of paraffin-embedded human breast cancer tissue slide using 12745-1-AP (MEK6 antibody) at dilution of 1:200 (under 10x lens). Heat mediated antigen retrieval with Tris-EDTA buffer (pH 9.0).



Immunohistochemical analysis of paraffin-embedded human breast cancer tissue slide using 12745-1-AP (MEK6 antibody) at dilution of 1:200 (under 40x lens). Heat mediated antigen retrieval with Tris-EDTA buffer (pH 9.0).



1X10<sup>6</sup> MCF-7 cells were stained with 0.2ug MEK6 antibody (12745-1-AP, red) and control antibody (blue). Fixed with 90% MeOH blocked with 3% BSA (30 min). Alexa Fluor 488-conjugated AffiniPure Goat Anti-Rabbit IgG(H+L) with dilution 1:1500.