

For Research Use Only

PPP2R2C Polyclonal antibody

Catalog Number: 12747-1-AP **3 Publications**



Basic Information

Catalog Number: 12747-1-AP	GenBank Accession Number: BC032954	Purification Method: Antigen affinity purification
Size: 150ul , Concentration: 500 µg/ml by Nanodrop and 333 µg/ml by Bradford method using BSA as the standard;	GeneID (NCBI): 5522	Recommended Dilutions: WB 1:500-1:2000 IHC 1:20-1:200
Source: Rabbit	Full Name: protein phosphatase 2 (formerly 2A), regulatory subunit B, gamma isoform	
Isotype: IgG	Calculated MW: 430 aa, 49 kDa	
Immunogen Catalog Number: AG3470	Observed MW: 49 kDa	

Applications

Tested Applications:
FC, IHC, WB, ELISA

Cited Applications:
WB

Species Specificity:
human, mouse, rat

Cited Species:
human, mouse

Note-IHC: suggested antigen retrieval with TE buffer pH 9.0; (*) Alternatively, antigen retrieval may be performed with citrate buffer pH 6.0

Positive Controls:

WB : HeLa cells, MCF-7 cells, mouse testis tissue

IHC : human breast cancer tissue, human brain tissue, human testis tissue

Background Information

Notable Publications

Author	Pubmed ID	Journal	Application
Liping Chen	25236601	J Cell Sci	
Shunta Ikeda	32663263	J Biochem	WB
G F Sengül	37926156	Biochim Biophys Acta Mol Cell Res	WB

Storage

Storage:

Store at -20°C. Stable for one year after shipment.

Storage Buffer:

PBS with 0.02% sodium azide and 50% glycerol pH 7.3.

Aliquoting is unnecessary for -20°C storage

***** 20ul sizes contain 0.1% BSA**

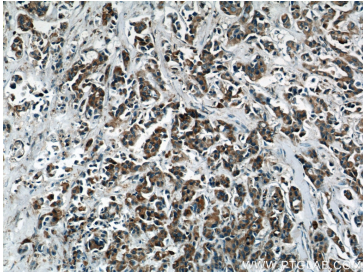
For technical support and original validation data for this product please contact:

T: 1 (888) 4PTGLAB (1-888-478-4522) (toll free in USA), or 1(312) 455-8498 (outside USA)

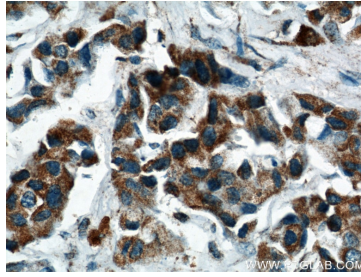
E: proteintech@ptglab.com
W: ptglab.com

This product is exclusively available under Proteintech Group brand and is not available to purchase from any other manufacturer.

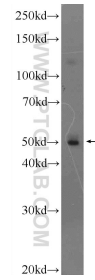
Selected Validation Data



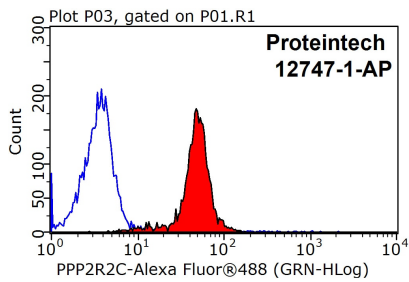
Immunohistochemical analysis of paraffin-embedded human breast cancer using 12747-1-AP (PPP2R2C antibody) at dilution of 1:50 (under 10x lens).



Immunohistochemical analysis of paraffin-embedded human breast cancer using 12747-1-AP (PPP2R2C antibody) at dilution of 1:50 (under 40x lens).



HeLa cells were subjected to SDS PAGE followed by western blot with 12747-1-AP (PPP2R2C Antibody) at dilution of 1:1000 incubated at room temperature for 1.5 hours.



1X10⁶ MCF-7 cells were stained with 0.2ug PPP2R2C antibody (12747-1-AP, red) and control antibody (blue). Fixed with 90% MeOH blocked with 3% BSA (30 min). Alexa Fluor 488-conjugated AffiniPure Goat Anti-Rabbit IgG(H+L) with dilution 1:1500.