

For Research Use Only

CDCP1 Polyclonal antibody

Catalog Number: 12754-1-AP

2 Publications



Basic Information

Catalog Number: 12754-1-AP	GenBank Accession Number: BC021099	Purification Method: Antigen affinity purification
Size: 150ul , Concentration: 300 ug/ml by Nanodrop;	GeneID (NCBI): 64866	Recommended Dilutions: WB 1:500-1:2000 IHC 1:50-1:500
Source: Rabbit	UNIPROT ID: Q9H5V8	
Isotype: IgG	Full Name: CUB domain containing protein 1	
Immunogen Catalog Number: AG3439	Calculated MW: 836 aa, 93 kDa	
	Observed MW: 72 kDa, 130 kDa	

Applications

Tested Applications: WB, IHC, ELISA	Positive Controls:
Cited Applications: WB	WB : A549 cells, LNCaP cells, PC-3 cells
Species Specificity: human, mouse, rat	IHC : human skin cancer tissue,
Cited Species: human, mouse	
Note-IHC: suggested antigen retrieval with TE buffer pH 9.0; (*) Alternatively, antigen retrieval may be performed with citrate buffer pH 6.0	

Background Information

CDCP1, also called CD318, TRASK, and SIMA 135, is a 135-140 kDa transmembrane protein containing three CUB domains within the extracellular region and a hexalysine stretch within the cytoplasmic region. A soluble form with MW 80 kDa (p80) is cleaved at an unidentified site on the N-terminal side. CDCP1 is a novel marker for hematopoietic stem cells.

Notable Publications

Author	Pubmed ID	Journal	Application
Fei Geng	33260155	Aging (Albany NY)	WB
Wanzun Lin	32308755	Theranostics	WB

Storage

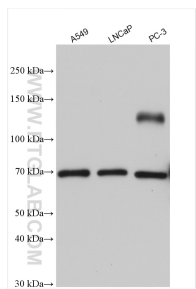
Storage:
Store at -20°C. Stable for one year after shipment.
Storage Buffer:
PBS with 0.02% sodium azide and 50% glycerol pH 7.3.
Aliquoting is unnecessary for -20°C storage

*** 20ul sizes contain 0.1% BSA

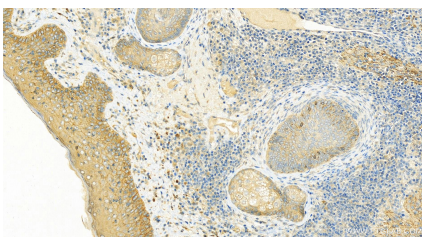
For technical support and original validation data for this product please contact:
T: 1 (888) 4PTGLAB (1-888-478-4522) (toll free in USA), or 1(312) 455-8498 (outside USA)
E: proteintech@ptglab.com
W: ptglab.com

This product is exclusively available under Proteintech Group brand and is not available to purchase from any other manufacturer.

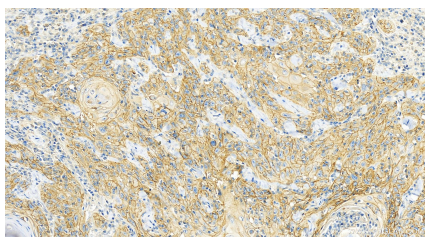
Selected Validation Data



Various lysates were subjected to SDS PAGE followed by western blot with 12754-1-AP (CDCP1 antibody) at dilution of 1:1000 incubated at room temperature for 1.5 hours.



Immunohistochemical analysis of paraffin-embedded human skin cancer tissue slide using 12754-1-AP (CDCP1 antibody) at dilution of 1:200 (under 20x lens). Heat mediated antigen retrieval with Tris-EDTA buffer (pH 9.0).



Immunohistochemical analysis of paraffin-embedded human skin cancer tissue slide using 12754-1-AP (CDCP1 antibody) at dilution of 1:200 (under 20x lens). Heat mediated antigen retrieval with Tris-EDTA buffer (pH 9.0).