

For Research Use Only

# KIF1C Polyclonal antibody

Catalog Number: 12760-1-AP

Featured Product

3 Publications



## Basic Information

### Catalog Number:

12760-1-AP

### Size:

150ul, Concentration: 400 ug/ml by Nanodrop and 180 ug/ml by Bradford method using BSA as the standard;

### Source:

Rabbit

### Isotype:

IgG

### Immunogen Catalog Number:

AG3500

### GenBank Accession Number:

BC034993

### GeneID (NCBI):

10749

### UNIPROT ID:

O43896

### Full Name:

kinesin family member 1C

### Calculated MW:

1103 aa, 123 kDa

### Observed MW:

135-140 kDa

### Purification Method:

Antigen affinity purification

### Recommended Dilutions:

WB 1:500-1:2000

IP 0.5-4.0 ug for 1.0-3.0 mg of total protein lysate

IHC 1:50-1:500

## Applications

### Tested Applications:

WB, IP, IHC, ELISA

### Cited Applications:

WB, IF, IP

### Species Specificity:

human, mouse, rat

### Cited Species:

human, mouse

**Note-IHC: suggested antigen retrieval with TE buffer pH 9.0; (\*) Alternatively, antigen retrieval may be performed with citrate buffer pH 6.0**

### Positive Controls:

WB : mouse heart tissue, A549 cells, HeLa cells

IP : mouse heart tissue,

IHC : human gliomas tissue,

## Notable Publications

Author	Pubmed ID	Journal	Application
Xavier Pichon	34493599	RNA	WB
Konstadinos Moissoglu	38979199	bioRxiv	
Ryan P Hildebrandt	37296096	Nat Commun	WB,IF,IP

## Storage

### Storage:

Store at -20°C. Stable for one year after shipment.

### Storage Buffer:

PBS with 0.02% sodium azide and 50% glycerol pH 7.3.

Aliquoting is unnecessary for -20°C storage

\*\*\* 20ul sizes contain 0.1% BSA

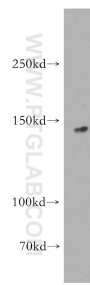
For technical support and original validation data for this product please contact:

T: 1 (888) 4PTGLAB (1-888-478-4522) (toll free in USA), or 1(312) 455-8498 (outside USA)

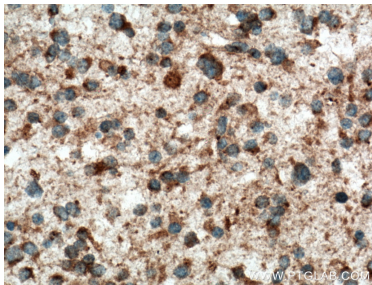
E: [proteintech@ptglab.com](mailto:proteintech@ptglab.com)  
W: [ptglab.com](http://ptglab.com)

This product is exclusively available under Proteintech Group brand and is not available to purchase from any other manufacturer.

Selected Validation Data



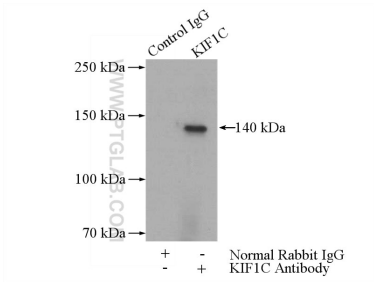
mouse heart tissue were subjected to SDS PAGE followed by western blot with 12760-1-AP (KIF1C antibody) at dilution of 1:500 incubated at room temperature for 1.5 hours.



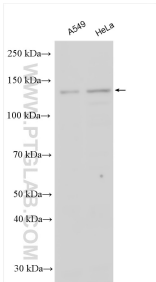
Immunohistochemical analysis of paraffin-embedded human gliomas tissue slide using 12760-1-AP (KIF1C antibody) at dilution of 1:200 (under 40x lens. Heat mediated antigen retrieval with Tris-EDTA buffer (pH 9.0).



Immunohistochemical analysis of paraffin-embedded human gliomas tissue slide using 12760-1-AP (KIF1C antibody) at dilution of 1:200 (under 10x lens. Heat mediated antigen retrieval with Tris-EDTA buffer (pH 9.0).



IP result of anti-KIF1C (IP:12760-1-AP, 5ug; Detection:12760-1-AP 1:300) with mouse heart tissue lysate 4000ug.



Various lysates were subjected to SDS PAGE followed by western blot with 12760-1-AP (KIF1C antibody) at dilution of 1:1000 incubated at room temperature for 1.5 hours.