

For Research Use Only

# BBS4 Polyclonal antibody, PBS Only

Catalog Number: 12766-1-PBS

Featured Product



## Basic Information

**Catalog Number:**

12766-1-PBS

**Size:**

100ug, Concentration: 1 mg/ml by Nanodrop;

**Source:**

Rabbit

**Isotype:**

IgG

**Immunogen Catalog Number:**

AG3430

**GenBank Accession Number:**

BC027624

**GeneID (NCBI):**

585

**UNIPROT ID:**

Q96RK4

**Full Name:**

Bardet-Biedl syndrome 4

**Calculated MW:**

519 aa, 58 kDa

**Observed MW:**

50-60 kDa

**Purification Method:**

Antigen affinity purification

## Applications

**Tested Applications:**

WB, IHC, IF/ICC, Indirect ELISA

**Species Specificity:**

human, mouse, rat

## Background Information

BBS4 (Bardet-Biedl syndrome protein 4) is one of the early BBS proteins discovered, with 35 mutations reported to cause the BBS phenotype (PMID: 26762677). BBS4 undergoes localization to the centriolar satellites of centrosomes and basal body of primary cilia, where it takes part in recruiting cargo to centriolar satellites and allowing the formation of a functional centrosomal microtubule organizing center (MTOC) (PMID: 25860617). Some research has found that BBS4 expression in humans during the development of CNS and sensory organs, concerning the cardinal clinical signs of BBS (PMID: 33860840).

## Storage

**Storage:**

Store at -80°C.

**Storage Buffer:**

PBS only, pH7.3

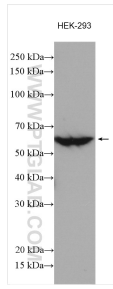
For technical support and original validation data for this product please contact:

T: 1 (888) 4PTGLAB (1-888-478-4522) (toll free in USA), or 1(312) 455-8498 (outside USA)

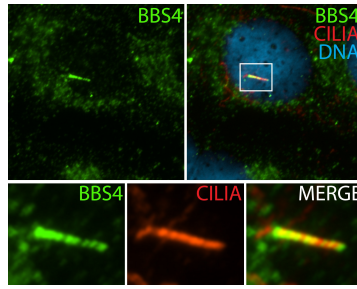
E: [proteintech@ptglab.com](mailto:proteintech@ptglab.com)  
W: [ptglab.com](http://ptglab.com)

This product is exclusively available under Proteintech Group brand and is not available to purchase from any other manufacturer.

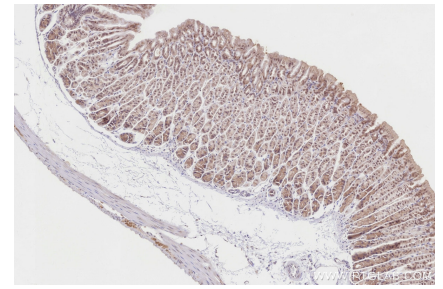
## Selected Validation Data



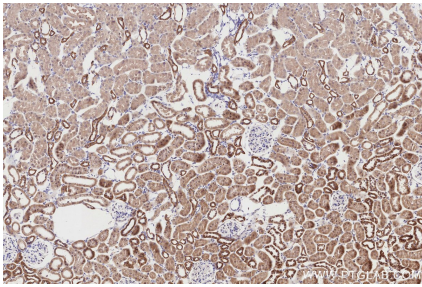
HEK-293 cell lysates were subjected to SDS PAGE followed by western blot with 12766-1-AP (BBS4 antibody) at dilution of 1:2000 incubated at room temperature for 1.5 hours. This data was developed using the same antibody clone with 12766-1-PBS in a different storage buffer formulation.



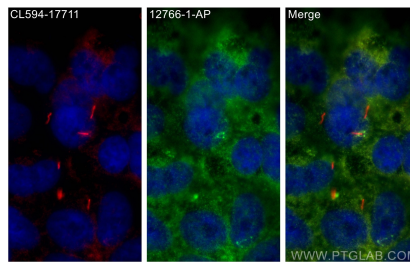
IF result (cytoplasm and the length of cilia cilia stain) of anti-BBS4 (12766-1-AP; 1:50) with serum-starved hTERT-RPE1 cell (MeOH fixed) by Dr. Moshe Kim. This data was developed using the same antibody clone with 12766-1-PBS in a different storage buffer formulation.



Immunohistochemical analysis of paraffin-embedded mouse stomach tissue slide using 12766-1-AP (BBS4 antibody) at dilution of 1:1000 (under 10x lens). Heat mediated antigen retrieval with Tris-EDTA buffer (pH 9.0). This data was developed using the same antibody clone with 12766-1-PBS in a different storage buffer formulation.



Immunohistochemical analysis of paraffin-embedded rat kidney tissue slide using 12766-1-AP (BBS4 antibody) at dilution of 1:1000 (under 10x lens). Heat mediated antigen retrieval with Tris-EDTA buffer (pH 9.0). This data was developed using the same antibody clone with 12766-1-PBS in a different storage buffer formulation.



Immunofluorescent analysis of (4% PFA) fixed hTERT-RPE1 cells using BBS4 antibody (12766-1-AP) at dilution of 1:400 and Multi-rAb Coralite® Plus 488-Goat Anti-Rabbit Recombinant Secondary Antibody (H+L) (RGAR002), Coralite® 594 ARL13B antibody (CL594-17711, red). This data was developed using the same antibody clone with 12766-1-PBS in a different storage buffer formulation.