

For Research Use Only

SLC26A8 Polyclonal antibody

Catalog Number: 12776-1-AP

2 Publications



Basic Information

Catalog Number:

12776-1-AP

Size:

150ul, Concentration: 900 ug/ml by Nanodrop;

Source:

Rabbit

Isotype:

IgG

Immunogen Catalog Number:

AG3472

GenBank Accession Number:

BC025408

GeneID (NCBI):

116369

UNIPROT ID:

Q96RN1

Full Name:

solute carrier family 26, member 8

Calculated MW:

970 aa, 109 kDa

Observed MW:

62, 86 and 97 kDa

Purification Method:

Antigen affinity purification

Recommended Dilutions:

WB 1:500-1:1000

IF-P 1:50-1:500

Applications

Tested Applications:

WB, IF-P, ELISA

Cited Applications:

WB, IF

Species Specificity:

human, mouse

Cited Species:

human, mouse

Positive Controls:

WB : human testis tissue, mouse testis tissue

IF-P : mouse testis tissue,

Background Information

SLC26A8, also named as TAT1, acts as a DIDS-sensitive anion exchanger mediating chloride, sulfate and oxalate transport. It has been reported that SLC26A8 is a sulfate transporter specifically expressed in spermatocytes and spermatids, playing a key role in spermatogenesis. There are several isoforms of SLC26A8 and 12776-1-AP antibody detects 62, 86 and 97 kDa protein in SDS-PAGE. (PMID: 11278976; 11834742)

Notable Publications

Author	Pubmed ID	Journal	Application
Bin Mao	38978230	Asian J Androl	IF
Kun Mei	36733384	Front Immunol	WB

Storage

Storage:

Store at -20°C. Stable for one year after shipment.

Storage Buffer:

PBS with 0.02% sodium azide and 50% glycerol pH 7.3.

Aliquoting is unnecessary for -20°C storage

*** 20ul sizes contain 0.1%BSA

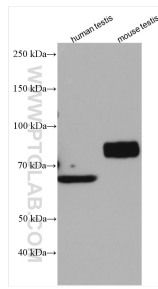
For technical support and original validation data for this product please contact:

T: 1 (888) 4PTGLAB (1-888-478-4522) (toll free in USA), or 1(312) 455-8498 (outside USA)

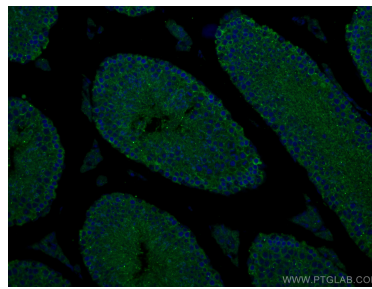
E: proteintech@ptglab.com
W: ptglab.com

This product is exclusively available under Proteintech Group brand and is not available to purchase from any other manufacturer.

Selected Validation Data



Various lysates were subjected to SDS PAGE followed by western blot with 12776-1-AP (SLC26A8 antibody) at dilution of 1:500 incubated at room temperature for 1.5 hours.



Immunofluorescent analysis of (4% PFA) fixed mouse testis tissue using 12776-1-AP (SLC26A8 antibody), at dilution of 1:100 and CoraLite®488-Conjugated AffiniPure Goat Anti-Rabbit IgG(H+L).