

For Research Use Only

CP110 Polyclonal antibody

Catalog Number: 12780-1-AP

Featured Product

153 Publications



Basic Information

Catalog Number:

12780-1-AP

Size:

150ul, Concentration: 550 ug/ml by Nanodrop;

Source:

Rabbit

Isotype:

IgG

Immunogen Catalog Number:

AG3489

GenBank Accession Number:

BC036654

GeneID (NCBI):

9738

UNIPROT ID:

O43303

Full Name:

CP110 protein

Calculated MW:

991 aa, 111 kDa

Observed MW:

113 kDa

Purification Method:

Antigen affinity purification

Recommended Dilutions:

WB 1:2000-1:12000

IP 0.5-4.0 ug for 1.0-3.0 mg of total protein lysate

IHC 1:250-1:1000

IF/ICC 1:50-1:500

Applications

Tested Applications:

WB, IHC, IF/ICC, FC (Intra), IP, ELISA

Cited Applications:

WB, IHC, IF, IP

Species Specificity:

human, mouse, rat, canine

Cited Species:

human, mouse, rat, canine, zebrafish, drosophila, xenopus

Note-IHC: suggested antigen retrieval with TE buffer pH 9.0; (*) Alternatively, antigen retrieval may be performed with citrate buffer pH 6.0

Positive Controls:

WB : HCT 116 cells, HeLa cells, HEK-293T cells, Jurkat cells, MOLT-4 cells

IP : Jurkat cells,

IHC : human prostate cancer tissue,

IF/ICC : hTERT-RPE1 cells,

Background Information

CP110, also named as CCP110 and KIAA0419, is an 110kDa protein. This gene is different to the gene CEP110 (geneID:11064; CNTRL). CP110 is a centriolar protein that positively regulates centriole duplication while restricting centriole elongation and ciliogenesis. And it acts as a key negative regulator of ciliogenesis in collaboration with CEP97 by capping the mother centriole thereby preventing cilia formation.

Notable Publications

Author	Pubmed ID	Journal	Application
Roberta Sala	32966175	Mol Biol Cell	IF
Chii Shyang Fong	30230954	Mol Biol Cell	
Emmanuelle Steib	32946374	Elife	IF

Storage

Storage:

Store at -20°C. Stable for one year after shipment.

Storage Buffer:

PBS with 0.02% sodium azide and 50% glycerol, pH7.3

Aliquoting is unnecessary for -20°C storage

*** 20ul sizes contain 0.1% BSA

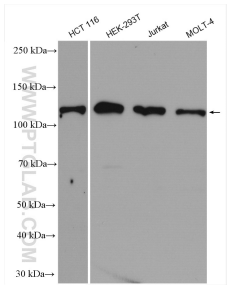
For technical support and original validation data for this product please contact:

T: 1 (888) 4PTGLAB (1-888-478-4522) (toll free in USA), or 1(312) 455-8498 (outside USA)

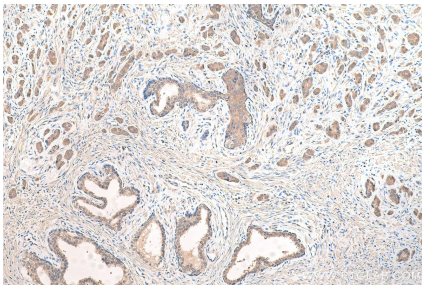
E: proteintech@ptglab.com
W: ptglab.com

This product is exclusively available under Proteintech Group brand and is not available to purchase from any other manufacturer.

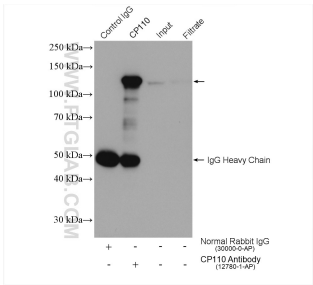
Selected Validation Data



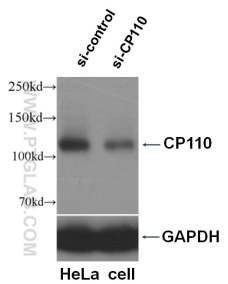
Various lysates were subjected to SDS PAGE followed by western blot with 12780-1-AP (CP110 antibody) at dilution of 1:6000 incubated at room temperature for 1.5 hours.



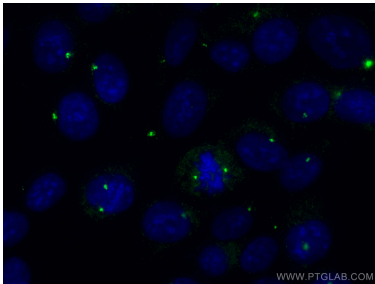
Immunohistochemical analysis of paraffin-embedded human prostate cancer tissue slide using 12780-1-AP (CP110 antibody) at dilution of 1:500 (under 10x lens). Heat mediated antigen retrieval with Tris-EDTA buffer (pH 9.0).



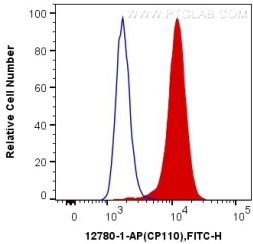
IP result of anti-CP110 (IP:12780-1-AP, 4ug; Detection:12780-1-AP 1:1500) with Jurkat cells lysate 2400 ug.



WB result of CP110 antibody (12780-1-AP, 1:500) with si-control and si-CP110 transfected HeLa cells.



Immunofluorescent analysis of (-20°C Methanol) fixed hTERT-RPE1 cells using CP110 antibody (12780-1-AP) at dilution of 1:200 and CoraLite®488-Conjugated Goat Anti-Rabbit IgG(H+L) (SA00013-2).



1X10⁶ HeLa cells were intracellularly stained with 0.2 ug Anti-Human CP110 (12780-1-AP) and CoraLite®488-Conjugated Goat Anti-Rabbit IgG(H+L) at dilution 1:1000 (red), or 0.2 ug Control Antibody. Cells were fixed with 4% PFA and permeabilized with Flow Cytometry Perm Buffer (PF00011-C).