

For Research Use Only

CBLB Polyclonal antibody

Catalog Number: 12781-1-AP

Featured Product

16 Publications



Basic Information

Catalog Number:

12781-1-AP

Size:

150ul, Concentration: 750 ug/ml by Nanodrop;

Source:

Rabbit

Isotype:

IgG

Immunogen Catalog Number:

AG3491

GenBank Accession Number:

BC032851

GeneID (NCBI):

868

UNIPROT ID:

Q13191

Full Name:

Cas-Br-M (murine) ecotropic retroviral transforming sequence b

Calculated MW:

982 aa, 109 kDa

Observed MW:

110-130 kDa

Purification Method:

Antigen affinity purification

Recommended Dilutions:

WB 1:500-1:2000

IP 0.5-4.0 ug for 1.0-3.0 mg of total protein lysate

IHC 1:50-1:500

IF/ICC 1:50-1:500

Applications

Tested Applications:

WB, IHC, IF/ICC, IP, ELISA

Cited Applications:

WB, IHC, IF, IP, CoIP

Species Specificity:

human, mouse, rat

Cited Species:

human, mouse, rat

Positive Controls:

WB : HEK-293 cells, A549 cells

IP : HEK-293 cells,

IHC : mouse colon tissue, human kidney tissue, human lung tissue, human placenta tissue, human spleen tissue, human testis tissue

IF/ICC : A431 cells,

Note-IHC: suggested antigen retrieval with TE buffer pH 9.0; (*) Alternatively, antigen retrieval may be performed with citrate buffer pH 6.0

Background Information

CBLB(E3 ubiquitin-protein ligase CBL-B) is also named RNF56 and plays a necessary role in preventing the inappropriate activation of NF- κ B in response to lipopolysaccharide and polymicrobial sepsis. CBLB can be phosphorylated on tyrosine and serine residues upon TCR or BCR activation, and various types of cell stimulation. It also has a crucial role in preventing chronic inflammation and autoimmunity. This protein has 3 isoforms produced by alternative splicing 109, 90, and 86 kDa, and observed molecular weight at 110-130 kDa.

Notable Publications

Author	Pubmed ID	Journal	Application
Klarissa Hanja Stürmer	25261476	J Immunol	FC
Ze-Qing Pu	33124187	J Cell Mol Med	WB,IF
Ke Chen	33116705	Diabetes Metab Syndr Obes	IHC,WB

Storage

Storage:

Store at -20°C. Stable for one year after shipment.

Storage Buffer:

PBS with 0.02% sodium azide and 50% glycerol, pH7.3

Aliquoting is unnecessary for -20°C storage

*** 20ul sizes contain 0.1% BSA

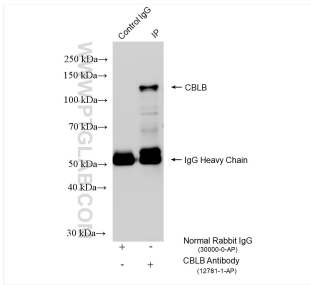
For technical support and original validation data for this product please contact:

T: 1 (888) 4PTGLAB (1-888-478-4522) (toll free in USA), or 1(312) 455-8498 (outside USA)

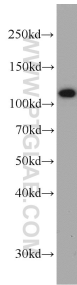
E: proteintech@ptglab.com
W: ptglab.com

This product is exclusively available under Proteintech Group brand and is not available to purchase from any other manufacturer.

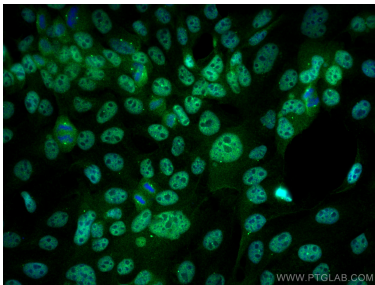
Selected Validation Data



IP result of anti-CBLB (IP:12781-1-AP, 4ug; Detection:12781-1-AP 1:600) with HEK-293 cells lysate 1800 ug.



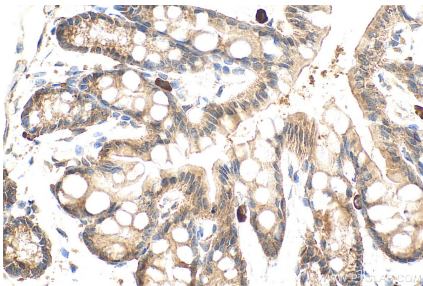
HEK-293 cells were subjected to SDS PAGE followed by western blot with 12781-1-AP (CBLB antibody) at dilution of 1:500 incubated at room temperature for 1.5 hours.



Immunofluorescent analysis of (4% PFA) fixed A431 cells using CBLB antibody (12781-1-AP) at dilution of 1:200 and CoraLite®488-Conjugated AffiniPure Goat Anti-Rabbit IgG(H+L).



Immunohistochemical analysis of paraffin-embedded mouse colon tissue slide using 12781-1-AP (CBLB antibody) at dilution of 1:200 (under 10x lens). Heat mediated antigen retrieval with Tris-EDTA buffer (pH 9.0).



Immunohistochemical analysis of paraffin-embedded mouse colon tissue slide using 12781-1-AP (CBLB antibody) at dilution of 1:200 (under 40x lens). Heat mediated antigen retrieval with Tris-EDTA buffer (pH 9.0).