

For Research Use Only

# SRFBP1 Polyclonal antibody

Catalog Number: 12792-1-AP



## Basic Information

<b>Catalog Number:</b> 12792-1-AP	<b>GenBank Accession Number:</b> BC031222	<b>Purification Method:</b> Antigen affinity purification
<b>Size:</b> 150ul, Concentration: 550 µg/ml by Nanodrop and 313 µg/ml by Bradford method using BSA as the standard;	<b>GeneID (NCBI):</b> 153443	<b>Recommended Dilutions:</b> WB 1:200-1:1000 IHC 1:20-1:200
<b>Source:</b> Rabbit	<b>Full Name:</b> serum response factor binding protein 1	
<b>Isotype:</b> IgG	<b>Calculated MW:</b> 429 aa, 49 kDa	
<b>Immunogen Catalog Number:</b> AG3517	<b>Observed MW:</b> 49 kDa	

## Applications

### Tested Applications:

IHC, WB, ELISA

### Species Specificity:

human, mouse

**Note-IHC: suggested antigen retrieval with TE buffer pH 9.0; (\*) Alternatively, antigen retrieval may be performed with citrate buffer pH 6.0**

### Positive Controls:

WB: mouse heart tissue, HeLa cells, HepG2 cells

IHC: human pancreas cancer tissue,

## Background Information

SRFBP1, also named as P49, p49/STRAP and STRAP, is abundantly expressed in heart and skeletal muscle, and at much lower levels in brain and lung. It may be involved in regulating transcriptional activation of cardiac genes during the aging process. SRFBP1 may play a role in biosynthesis and/or processing of SLC2A4 in adipose cells. This antibody is a rabbit polyclonal antibody raised against residues near the C terminus of human SRFBP1.

## Storage

### Storage:

Store at -20°C. Stable for one year after shipment.

### Storage Buffer:

PBS with 0.02% sodium azide and 50% glycerol pH 7.3.

Aliquoting is unnecessary for -20°C storage

\*\*\* 20ul sizes contain 0.1% BSA

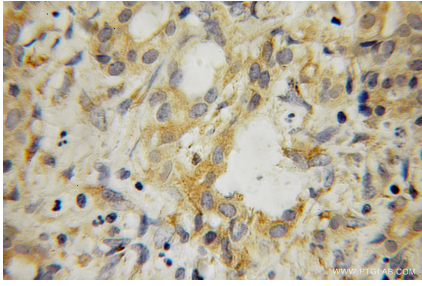
For technical support and original validation data for this product please contact:

T: 1 (888) 4PTGLAB (1-888-478-4522) (toll free in USA), or 1(312) 455-8498 (outside USA)

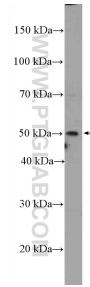
E: proteintech@ptglab.com  
W: ptglab.com

This product is exclusively available under Proteintech Group brand and is not available to purchase from any other manufacturer.

## Selected Validation Data



Immunohistochemical analysis of paraffin-embedded human pancreas cancer using 12792-1-AP (SRFBP1 antibody) at dilution of 1:100 (under 10x lens).



mouse heart tissue were subjected to SDS PAGE followed by western blot with 12792-1-AP (SRFBP1 Antibody) at dilution of 1:300 incubated at room temperature for 1.5 hours.