

For Research Use Only

SMAP1 Polyclonal antibody

Catalog Number: 12799-1-AP



Basic Information

Catalog Number: 12799-1-AP	GenBank Accession Number: BC036123	Purification Method: Antigen affinity purification
Size: 150ul , Concentration: 900 ug/ml by Nanodrop and 480 ug/ml by Bradford method using BSA as the standard;	GeneID (NCBI): 60682	Recommended Dilutions: WB 1:500-1:2000 IHC 1:20-1:200
Source: Rabbit	UNIPROT ID: Q8IYB5	
Isotype: IgG	Full Name: small ArfGAP 1	
Immunogen Catalog Number: AG3544	Calculated MW: 467 aa, 50 kDa	
	Observed MW: 50-55 kDa	

Applications

Tested Applications: WB, IHC, ELISA	Positive Controls:
Species Specificity: human, mouse, rat	WB : NIH/3T3 cells, human adrenal gland tissue, human plasma tissue, mouse brain tissue, rat lymph tissue
Note-IHC: suggested antigen retrieval with TE buffer pH 9.0; (*) Alternatively, antigen retrieval may be performed with citrate buffer pH 6.0	IHC : human stomach tissue,

Background Information

SMAP1, also named as FLJ13159 and SMAP 1, contains a Arf-GAP domain. SMAP1 is a GTPase activating protein for ARF6 that binds clathrin and regulates clathrin-dependent endocytosis. SMAP1 may play a role in erythropoiesis. This antibody is a rabbit polyclonal antibody raised against residues near the N terminus of human SMAP1.

Storage

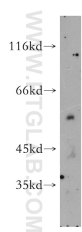
Storage:
Store at -20°C. Stable for one year after shipment.
Storage Buffer:
PBS with 0.02% sodium azide and 50% glycerol pH 7.3.
Aliquoting is unnecessary for -20°C storage

*** 20ul sizes contain 0.1% BSA

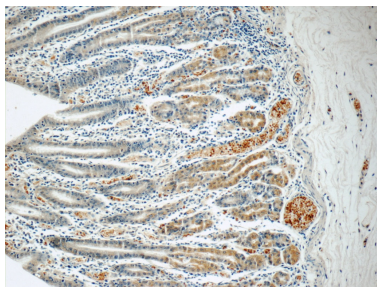
For technical support and original validation data for this product please contact:
T: 1 (888) 4PTGLAB (1-888-478-4522) (toll free in USA), or 1(312) 455-8498 (outside USA)
E: proteintech@ptglab.com
W: ptglab.com

This product is exclusively available under Proteintech Group brand and is not available to purchase from any other manufacturer.

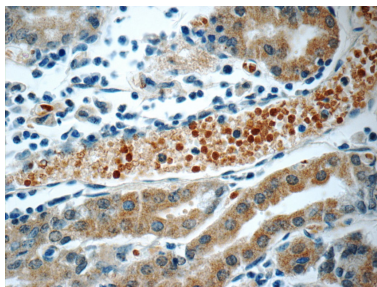
Selected Validation Data



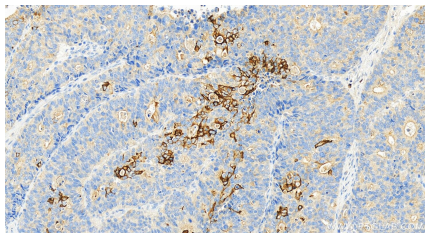
NIH/3T3 cells were subjected to SDS PAGE followed by western blot with 12799-1-AP (SMAP1 antibody) at dilution of 1:1000 incubated at room temperature for 1.5 hours.



Immunohistochemical analysis of paraffin-embedded human stomach tissue slide using 12799-1-AP (SMAP1 Antibody) at dilution of 1:50 (under 10x lens).



Immunohistochemical analysis of paraffin-embedded human stomach tissue slide using 12799-1-AP (SMAP1 Antibody) at dilution of 1:50 (under 40x lens).



Immunohistochemical analysis of paraffin-embedded normal stomach slide using 12799-1-AP (SMAP1 antibody) at dilution of 1:1200 (under 20x lens). Heat mediated antigen retrieval with Tris-EDTA buffer (pH 9.0).