

For Research Use Only

GATM Polyclonal antibody

Catalog Number: 12801-1-AP **8 Publications**



Basic Information

Catalog Number: 12801-1-AP	GenBank Accession Number: BC004141	Purification Method: Antigen affinity purification
Size: 150ul , Concentration: 1200 µg/ml by Nanodrop and 667 µg/ml by Bradford method using BSA as the standard;	GeneID (NCBI): 2628	Recommended Dilutions: WB 1:500-1:3000 IHC 1:20-1:200
Source: Rabbit	Full Name: glycine amidinotransferase (L-arginine:glycine amidinotransferase)	
Isotype: IgG	Calculated MW: 423 aa, 48 kDa	
Immunogen Catalog Number: AG3754	Observed MW: 48 kDa	

Applications

Tested Applications:
IHC, WB, ELISA

Cited Applications:
IF, IHC, WB

Species Specificity:
human, mouse, rat

Cited Species:
human, mouse

Note-IHC: suggested antigen retrieval with TE buffer pH 9.0; (*) Alternatively, antigen retrieval may be performed with citrate buffer pH 6.0

Positive Controls:

WB: mouse kidney tissue, human kidney tissue, rat kidney tissue, rat pancreas tissue

IHC: human pancreas cancer tissue,

Background Information

GATM, also known as AGAT, produces ornithine and guanidinoacetate (GAA) from arginine and glycine, and is a key enzyme for creatine synthesis. GATM deficiency in early infancy causes neurodevelopmental delay. GATM is predominantly expressed in kidney and pancreas in adults. Decrease of GATM proteins was observed in proximal tubule damage cases, which links GATM as a general marker for proximal tubule damage. Alternative splicing of GATM generates three isoforms with molecular weights between 44 kDa to 48 kDa.

Notable Publications

Author	Pubmed ID	Journal	Application
Qiong Lai	31972362	Biomed Pharmacother	WB, IHC
Sho Nishikawa	31914311	J Agric Food Chem	WB
Ali Sasani	31853708	Amino Acids	WB

Storage

Storage:

Store at -20°C. Stable for one year after shipment.

Storage Buffer:

PBS with 0.02% sodium azide and 50% glycerol pH 7.3.

Aliquoting is unnecessary for -20°C storage

*** 20ul sizes contain 0.1% BSA

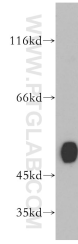
For technical support and original validation data for this product please contact:

T: 1 (888) 4PTGLAB (1-888-478-4522) (toll free in USA), or 1(312) 455-8498 (outside USA)

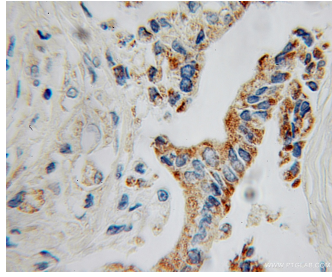
E: proteintech@ptglab.com
W: ptglab.com

This product is exclusively available under Proteintech Group brand and is not available to purchase from any other manufacturer.

Selected Validation Data



mouse kidney tissue were subjected to SDS PAGE followed by western blot with 12801-1-AP (GATM antibody) at dilution of 1:300 incubated at room temperature for 1.5 hours.



Immunohistochemical analysis of paraffin-embedded human pancreas cancer using 12801-1-AP (GATM antibody) at dilution of 1:100 (under 10x lens).