

For Research Use Only

CLEC2/CLEC1B Polyclonal antibody

Catalog Number: 12814-1-AP

2 Publications



Basic Information

Catalog Number:

12814-1-AP

Size:

150ul, Concentration: 150 ug/ml by Nanodrop;

Source:

Rabbit

Isotype:

IgG

Immunogen Catalog Number:

AG3512

GenBank Accession Number:

BC029554

GeneID (NCBI):

51266

UNIPROT ID:

Q9P126

Full Name:

C-type lectin domain family 1, member B

Calculated MW:

27 kDa

Observed MW:

32-38 kDa

Purification Method:

Antigen affinity purification

Recommended Dilutions:

WB 1:1000-1:6000

Applications

Tested Applications:

WB, ELISA

Cited Applications:

IHC

Species Specificity:

human

Cited Species:

human

Positive Controls:

WB : human peripheral blood platelets,

Background Information

C-type lectin-like receptor 2 (CLEC2, also known as CLEC1B) is a type II transmembrane receptor of the C-type lectin superfamily, which are characterized by one or more C-type lectin-like domains (CTLDs) (PMID: 10671229; 34177942). CLEC2 contains a single YXXL/hemi-ITAM (immuno-receptor tyrosine-based activation motif) within its cytoplasmic domain. CLEC-2 is highly expressed on platelets and megakaryocytes and at low levels on other hematopoietic cells, including dendritic cells, neutrophils, monocytes, and macrophages (PMID: 21728173). The first identified ligand for CLEC2 was the platelet-aggregating snake venom protein rhodocytin, and podoplanin has been established as an endogenous ligand for CLEC2 (PMID: 26151067). CLEC2 is involved in thrombosis/hemostasis, tumor metastasis, and lymphangiogenesis (PMID: 20525685). CLEC2 can be glycosylated and has been detected as 32- and 40-kDa forms in platelets with varying degrees of glycosylation (PMID: 16174766; 25150298; 21781241).

Notable Publications

Author	Pubmed ID	Journal	Application
Xiaoliang Liang	35734199	Int J Gen Med	IHC
Wei Jiang	39148004	EMBO Mol Med	

Storage

Storage:

Store at -20°C. Stable for one year after shipment.

Storage Buffer:

PBS with 0.02% sodium azide and 50% glycerol pH 7.3.

Aliquoting is unnecessary for -20°C storage

*** 20ul sizes contain 0.1% BSA

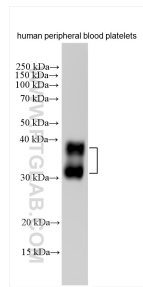
For technical support and original validation data for this product please contact:

T: 1 (888) 4PTGLAB (1-888-478-4522) (toll free in USA), or 1(312) 455-8498 (outside USA)

E: proteintech@ptglab.com
W: ptglab.com

This product is exclusively available under Proteintech Group brand and is not available to purchase from any other manufacturer.

Selected Validation Data



human peripheral blood platelets were subjected to SDS PAGE followed by western blot with 12814-1-AP (CLEC2/CLEC1B antibody) at dilution of 1:3000 incubated at room temperature for 1.5 hours.