

For Research Use Only

# SLC20A2 Polyclonal antibody

Catalog Number: 12820-1-AP

6 Publications



## Basic Information

### Catalog Number:

12820-1-AP

### Size:

150ul , Concentration: 600 µg/ml by Nanodrop and 200 µg/ml by Bradford method using BSA as the standard;

### Source:

Rabbit

### Isotype:

IgG

### Immunogen Catalog Number:

AG3469

### GenBank Accession Number:

BC028600

### GeneID (NCBI):

6575

### Full Name:

solute carrier family 20 (phosphate transporter), member 2

### Calculated MW:

652 aa, 70 kDa

### Observed MW:

68-70 kDa

### Purification Method:

Antigen affinity purification

### Recommended Dilutions:

WB 1:500-1:1000

IP 0.5-4.0 ug for 1.0-3.0 mg of total protein lysate

## Applications

### Tested Applications:

IP, WB, ELISA

### Cited Applications:

IF, WB

### Species Specificity:

human, mouse

### Cited Species:

human, mouse

### Positive Controls:

WB : mouse brain tissue, COLO 320 cells, mouse kidney tissue

IP : COLO 320 cells,

## Background Information

## Notable Publications

Author	Pubmed ID	Journal	Application
Toshimi Michigami	35577326	Bone	WB
Nina Bon	29233890	J Biol Chem	WB
Katalin Éva Sikura	31017307	Br J Pharmacol	WB

## Storage

### Storage:

Store at -20°C. Stable for one year after shipment.

### Storage Buffer:

PBS with 0.02% sodium azide and 50% glycerol pH 7.3.

Aliquoting is unnecessary for -20°C storage

\*\*\* 20ul sizes contain 0.1% BSA

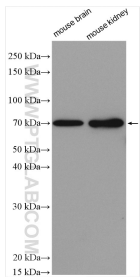
For technical support and original validation data for this product please contact:

T: 1 (888) 4PTGLAB (1-888-478-4522) (toll free in USA), or 1(312) 455-8498 (outside USA)

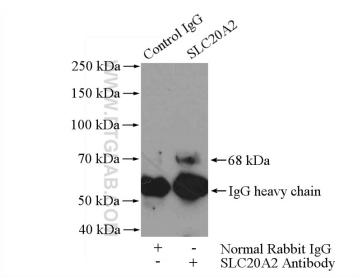
E: [proteintech@ptglab.com](mailto:proteintech@ptglab.com)  
W: [ptglab.com](http://ptglab.com)

This product is exclusively available under Proteintech Group brand and is not available to purchase from any other manufacturer.

Selected Validation Data



Various lysates were subjected to SDS PAGE followed by western blot with 12820-1-AP (SLC20A2 antibody) at dilution of 1:600 incubated at room temperature for 1.5 hours.



IP Result of anti-SLC20A2 (IP:12820-1-AP, 4ug; Detection:12820-1-AP 1:400) with COLO 320 cells lysate 2400ug.