

For Research Use Only

# SLC20A2 Polyclonal antibody, PBS Only

Catalog Number: 12820-1-PBS

Featured Product



## Basic Information

### Catalog Number:

12820-1-PBS

### Size:

100ug, Concentration: 1 mg/ml by Nanodrop;

### Source:

Rabbit

### Isotype:

IgG

### Immunogen Catalog Number:

AG3469

### GenBank Accession Number:

BC028600

### GeneID (NCBI):

6575

### UNIPROT ID:

Q08357

### Full Name:

solute carrier family 20 (phosphate transporter), member 2

### Calculated MW:

652 aa, 70 kDa

### Observed MW:

68-70 kDa

### Purification Method:

Antigen affinity purification

## Applications

### Tested Applications:

WB, IHC, IF-P, IP, Indirect ELISA

### Species Specificity:

human, mouse

## Background Information

SLC20A2 (also known as PiT2) is a sodium (Na)-phosphate (Pi) co-transporter that belongs to the SLC20 family. SLC20A2 is highly expressed in the central nervous system and controls hippocampal-dependent learning and memory (PMID: 38195526). SLC20A2 is the major causative gene for primary familial brain calcification (PFBC), a rare neurological disease characterized by widespread cognitive impairment.

## Storage

### Storage:

Store at -80°C.

### Storage Buffer:

PBS Only

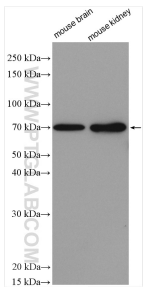
For technical support and original validation data for this product please contact:

T: 1 (888) 4PTGLAB (1-888-478-4522) (toll free in USA), or 1(312) 455-8498 (outside USA)

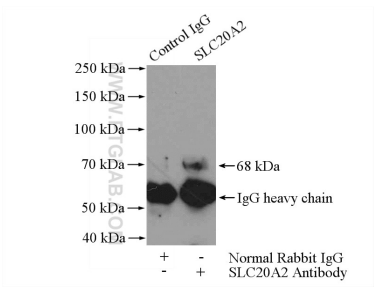
E: [proteintech@ptglab.com](mailto:proteintech@ptglab.com)  
W: [ptglab.com](http://ptglab.com)

This product is exclusively available under Proteintech Group brand and is not available to purchase from any other manufacturer.

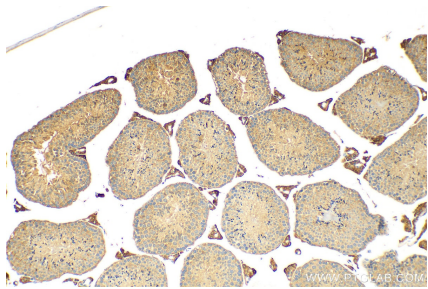
Selected Validation Data



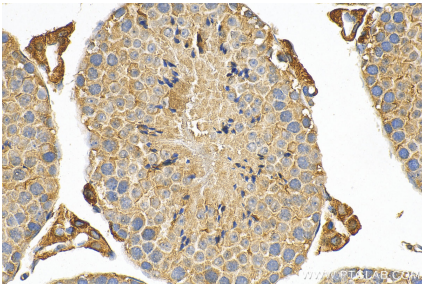
Various lysates were subjected to SDS PAGE followed by western blot with 12820-1-AP (SLC20A2 antibody) at dilution of 1:600 incubated at room temperature for 1.5 hours. This data was developed using the same antibody clone with 12820-1-PBS in a different storage buffer formulation.



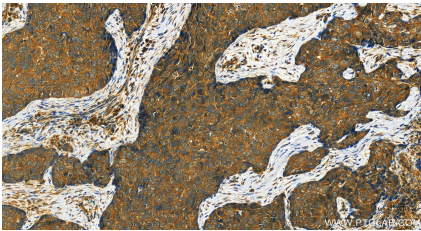
IP result of anti-SLC20A2 (IP:12820-1-AP, 4ug; Detection:12820-1-AP 1:400) with COLO 320 cells lysate 2400ug. This data was developed using the same antibody clone with 12820-1-PBS in a different storage buffer formulation.



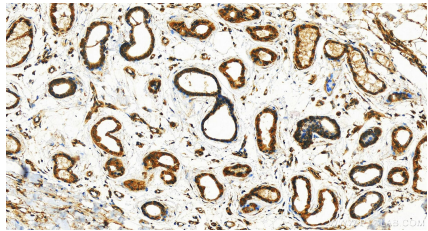
Immunohistochemical analysis of paraffin-embedded mouse testis tissue slide using 12820-1-AP (SLC20A2 antibody) at dilution of 1:400 (under 10x lens). Heat mediated antigen retrieval with Tris-EDTA buffer (pH 9.0). This data was developed using the same antibody clone with 12820-1-PBS in a different storage buffer formulation.



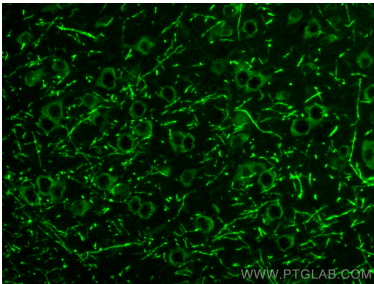
Immunohistochemical analysis of paraffin-embedded mouse testis tissue slide using 12820-1-AP (SLC20A2 antibody) at dilution of 1:400 (under 40x lens). Heat mediated antigen retrieval with Tris-EDTA buffer (pH 9.0). This data was developed using the same antibody clone with 12820-1-PBS in a different storage buffer formulation.



Immunohistochemical analysis of paraffin-embedded human bowen disease slide using 12820-1-AP (SLC20A2 antibody) at dilution of 1:200 (under 20x lens). Heat mediated antigen retrieval with Tris-EDTA buffer (pH 9.0). This data was developed using the same antibody clone with 12820-1-PBS in a different storage buffer formulation.



Immunohistochemical analysis of paraffin-embedded human bowen disease slide using 12820-1-AP (SLC20A2 antibody) at dilution of 1:200 (under 20x lens). Heat mediated antigen retrieval with Tris-EDTA buffer (pH 9.0). This data was developed using the same antibody clone with 12820-1-PBS in a different storage buffer formulation.



Immunofluorescent analysis of (4% PFA) fixed paraffin-embedded mouse brain tissue using SLC20A2 antibody (12820-1-AP) at dilution of 1:200 and Multi-rAb CoraLite ® Plus 488-Goat Anti-Rabbit Recombinant Secondary Antibody (H+L) (RGAR002). Heat mediated antigen retrieval with Tris-EDTA buffer (pH 9.0). This data was developed using the same antibody clone with 12820-1-PBS in a different storage buffer formulation.