

For Research Use Only

SRRM1 Polyclonal antibody

Catalog Number: 12822-1-AP

Featured Product

3 Publications



Basic Information

Catalog Number:

12822-1-AP

Size:

150ul, Concentration: 1000 ug/ml by Nanodrop;

Source:

Rabbit

Isotype:

IgG

Immunogen Catalog Number:

AG3513

GenBank Accession Number:

BC036187

GeneID (NCBI):

10250

UNIPROT ID:

Q8IYB3

Full Name:

serine/arginine repetitive matrix 1

Calculated MW:

904 aa, 102 kDa

Observed MW:

120-160 kDa

Purification Method:

Antigen affinity purification

Recommended Dilutions:

WB 1:500-1:1000

IP 0.5-4.0 ug for 1.0-3.0 mg of total protein lysate

Applications

Tested Applications:

WB, IP, ELISA

Cited Applications:

WB, ColP

Species Specificity:

human, mouse, rat

Cited Species:

human

Positive Controls:

WB : mouse liver tissue, HeLa cells, Jurkat cells, UV treated HEK-293

IP : HeLa cells,

Background Information

SRRM1, also named as SRM160 and POP101, contains one PWI domain and belongs to the splicing factor SR family. As part of pre- and post-splicing multiprotein mRNP complexes, SRRM1 is involved in numerous pre-mRNA processing events. It promotes constitutive and exonic splicing enhancer (ESE)-dependent splicing activation by bridging together sequence-specific (SR family proteins, SFRS4, SFRS5 and TRA2B/SFRS10) and basal snRNP (SNRP70 and SNRPA1) factors of the spliceosome. SRRM1 stimulates mRNA 3'-end cleavage independently of the formation of an exon junction complex. It binds both pre-mRNA and spliced mRNA 20-25 nt upstream of exon-exon junctions. SRRM1 binds RNA and DNA with low sequence specificity and has similar preference for either double- or single-stranded nucleic acid substrates. SRRM1, a protein of high molecular weight (120-160kd), has a heavy glycosylation level and is normally highly phosphorylated. This antibody is a rabbit polyclonal antibody raised against residues near the N terminus of human SRRM1.

Notable Publications

Author	Pubmed ID	Journal	Application
Xiaoyan Song	36270072	Tissue Cell	ColP
Taiki Baba	33872670	Biochim Biophys Acta Mol Cell Res	WB
Wojciechowskyj Jason A JA	23684312	Cell Host Microbe	WB

Storage

Storage:

Store at -20°C. Stable for one year after shipment.

Storage Buffer:

PBS with 0.02% sodium azide and 50% glycerol pH 7.3.

Aliquoting is unnecessary for -20°C storage

*** 20ul sizes contain 0.1% BSA

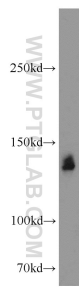
For technical support and original validation data for this product please contact:

T: 1 (888) 4PTGLAB (1-888-478-4522) (toll free in USA), or 1(312) 455-8498 (outside USA)

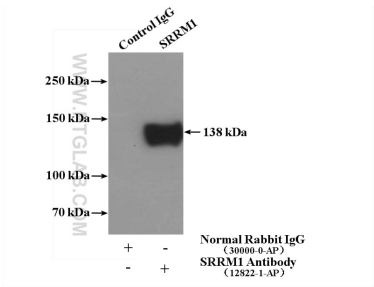
E: proteintech@ptglab.com
W: ptglab.com

This product is exclusively available under Proteintech Group brand and is not available to purchase from any other manufacturer.

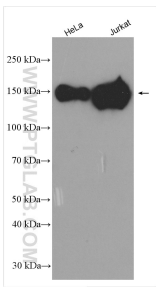
Selected Validation Data



mouse liver tissue were subjected to SDS PAGE followed by western blot with 12822-1-AP (SRRM1 antibody) at dilution of 1:500 incubated at room temperature for 1.5 hours.



IP result of anti-SRRM1 (IP:12822-1-AP, 4ug; Detection:12822-1-AP 1:300) with HeLa cells lysate 3200ug.



Various lysates were subjected to SDS PAGE followed by western blot with 12822-1-AP (SRRM1 antibody) at dilution of 1:2000 incubated at room temperature for 1.5 hours.