

For Research Use Only

SUPV3L1 Polyclonal antibody

Catalog Number: 12826-1-AP **1 Publications**



Basic Information

Catalog Number: 12826-1-AP	GenBank Accession Number: BC036112	Purification Method: Antigen affinity purification
Size: 150ul , Concentration: 800 µg/ml by Nanodrop;	GeneID (NCBI): 6832	Recommended Dilutions: WB 1:2000-1:10000 IP 0.5-4.0 ug for IP and 1:200-1:1000 for WB
Source: Rabbit	Full Name: suppressor of var1, 3-like 1 (S. cerevisiae)	IF 1:50-1:500
Isotype: IgG	Calculated MW: 786 aa, 88 kDa	
Immunogen Catalog Number: AG3542	Observed MW: 70-80 kDa	

Applications

Tested Applications: IF, IP, WB, ELISA	Positive Controls: WB : HEK-293 cells, PC-3 cells, HeLa cells
Cited Applications: WB	IP : HeLa cells,
Species Specificity: human, mouse, rat	IF : HeLa cells,
Cited Species: human	

Background Information

SUPV3L1 is a major helicase player in mitochondrial RNA metabolism. It is involved in the degradation of non-coding mitochondrial transcripts (MT-ncRNA) and tRNA-like molecules (PMID: 29967381).

Notable Publications

Author	Pubmed ID	Journal	Application
Selma L van Esveld	35023579	J Inherit Metab Dis	WB

Storage

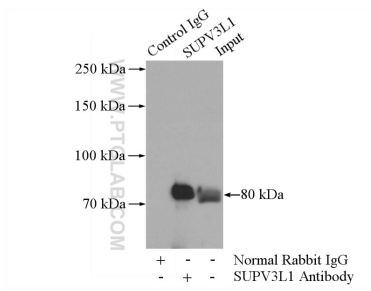
Storage:
Store at -20°C. Stable for one year after shipment.
Storage Buffer:
PBS with 0.02% sodium azide and 50% glycerol pH 7.3.
Aliquoting is unnecessary for -20°C storage

***** 20ul sizes contain 0.1% BSA**

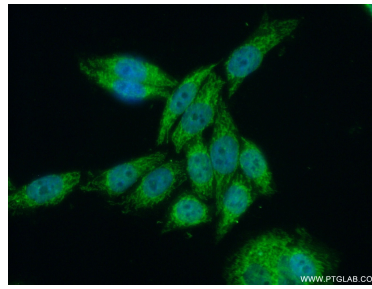
For technical support and original validation data for this product please contact:
T: 1 (888) 4PTGLAB (1-888-478-4522) (toll free in USA), or 1(312) 455-8498 (outside USA) E: proteintech@ptglab.com W: ptglab.com

This product is exclusively available under Proteintech Group brand and is not available to purchase from any other manufacturer.

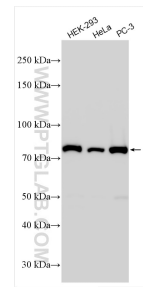
Selected Validation Data



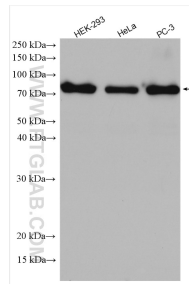
IP Result of anti-SUPV3L1 (IP:12826-1-AP, 4ug; Detection:12826-1-AP 1:300) with HeLa cells lysate 1200ug.



Immunofluorescent analysis of (10% Formaldehyde) fixed HeLa cells using 12826-1-AP (SUPV3L1 antibody) at dilution of 1:50 and Alexa Fluor 488-conjugated AffiniPure Goat Anti-Rabbit IgG(H+L).



Various lysates were subjected to SDS PAGE followed by western blot with 12826-1-AP (SUPV3L1 antibody) at dilution of 1:5000 incubated at room temperature for 1.5 hours.



Various lysates were subjected to SDS PAGE followed by western blot with 12826-1-AP (SUPV3L1 antibody) at dilution of 1:800 incubated at room temperature for 1.5 hours.