

For Research Use Only

SPACA1 Polyclonal antibody

Catalog Number: 12829-1-AP **1 Publications**



Basic Information

Catalog Number: 12829-1-AP	GenBank Accession Number: BC029488	Purification Method: Antigen affinity purification
Size: 150ul , Concentration: 300 µg/ml by Nanodrop and 133 µg/ml by Bradford method using BSA as the standard;	GeneID (NCBI): 81833	Recommended Dilutions: IHC 1:20-1:200
Source: Rabbit	Full Name: sperm acrosome associated 1	
Isotype: IgG	Calculated MW: 294 aa, 32 kDa	
Immunogen Catalog Number: AG3549		

Applications

Tested Applications: IHC, ELISA	Positive Controls: IHC : human testis tissue,
Cited Applications: WB	
Species Specificity: human, mouse	
Cited Species: mouse	
Note-IHC: suggested antigen retrieval with TE buffer pH 9.0; (*) Alternatively, antigen retrieval may be performed with citrate buffer pH 6.0	

Background Information

SPACA1, also named as SAMP32, is a membrane protein that localizes in the equatorial segment of spermatozoa in mammals and is reported to function in sperm-egg fusion. SPACA1 is regulated by phosphorylation.

Notable Publications

Author	Pubmed ID	Journal	Application
Takujiro Homma	31590572	Free Radic Res	WB

Storage

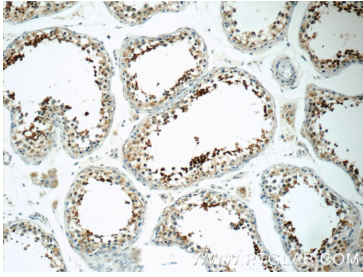
Storage:
Store at -20°C. Stable for one year after shipment.
Storage Buffer:
PBS with 0.02% sodium azide and 50% glycerol pH 7.3.
Aliquoting is unnecessary for -20°C storage

*** 20ul sizes contain 0.1% BSA

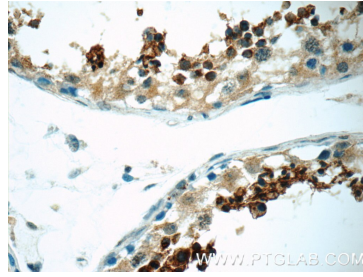
For technical support and original validation data for this product please contact:
T: 1 (888) 4PTGLAB (1-888-478-4522) (toll free in USA), or 1(312) 455-8498 (outside USA)
E: proteintech@ptglab.com
W: ptglab.com

This product is exclusively available under Proteintech Group brand and is not available to purchase from any other manufacturer.

Selected Validation Data



Immunohistochemical analysis of paraffin-embedded human testis tissue slide using 12829-1-AP (SPACA1 Antibody) at dilution of 1:50 (under 10x lens).



Immunohistochemical analysis of paraffin-embedded human testis tissue slide using 12829-1-AP (SPACA1 Antibody) at dilution of 1:50 (under 40x lens).