

Neuropeptide Y Polyclonal antibody

Catalog Number: 12833-1-AP

8 Publications

Basic Information

Catalog Number: 12833-1-AP	GenBank Accession Number: BC029497	Purification Method: Antigen affinity purification
Size: 150ul, Concentration: 800 µg/ml by Nanodrop;	GeneID (NCBI): 4852	Recommended Dilutions: IHC 1:50-1:500 IF 1:50-1:500
Source: Rabbit	Full Name: neuropeptide Y	
Isotype: IgG	Calculated MW: 97 aa, 11 kDa	
Immunogen Catalog Number: AG3568		

Applications

Tested Applications: IF, IHC, ELISA	Positive Controls:
Cited Applications: IF, IHC, WB	IHC : human brain tissue, mouse brain tissue, human pancreas cancer tissue, rat brain tissue
Species Specificity: human, mouse, rat	IF : mouse brain tissue, mouse eye tissue
Cited Species: human, rat, mouse	
Note-IHC: suggested antigen retrieval with TE buffer pH 9.0; (*) Alternatively, antigen retrieval may be performed with citrate buffer pH 6.0	

Background Information

Neuropeptide Y (NPY) is one of the most abundant peptides in the mammalian central nervous system (CNS). NPY has been linked to several physiological and pathological functions, such as feeding behaviour, memory processing, pain, anxiety, cell proliferation and many other processes in the central and peripheral nervous systems. The neuropeptide functions through G protein-coupled receptors to inhibit adenylyl cyclase, activate mitogen-activated protein kinase (MAPK), regulate intracellular calcium levels, and activate potassium channels. In addition, NPY was suggested as a potential neuroprotective agent in Alzheimer's disease by counteracting the toxic effect of β -amyloid in an in vitro model.

Notable Publications

Author	Pubmed ID	Journal	Application
Yuki Kajita	34803625	Front Behav Neurosci	IF
Libo Zhu	24685017	Acta Histochem	IHC
Yucheng Sun	33981574	J Orthop Translat	IHC

Storage

Storage:
Store at -20°C. Stable for one year after shipment.

Storage Buffer:
PBS with 0.02% sodium azide and 50% glycerol pH 7.3.

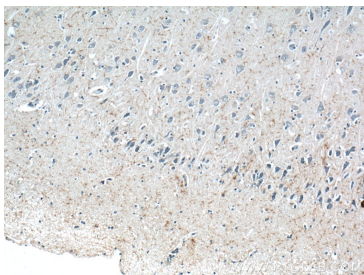
Aliquoting is unnecessary for -20°C storage

*** 20ul sizes contain 0.1% BSA

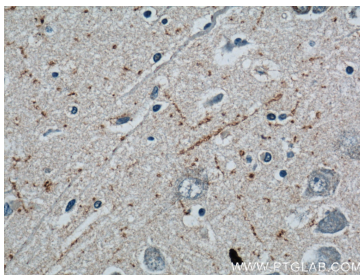
For technical support and original validation data for this product please contact:
 T: 1 (888) 4PTGLAB (1-888-478-4522) (toll free in USA), or 1(312) 455-8498 (outside USA)
 E: proteintech@ptglab.com
 W: ptglab.com

This product is exclusively available under Proteintech Group brand and is not available to purchase from any other manufacturer.

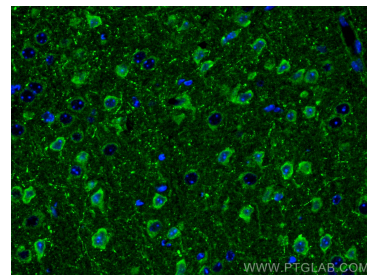
Selected Validation Data



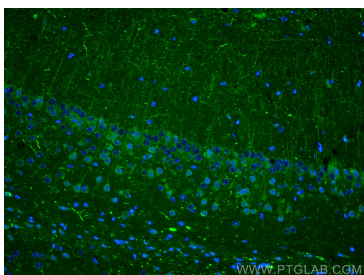
Immunohistochemical analysis of paraffin-embedded human brain tissue slide using 12833-1-AP (Neuropeptide Y antibody at dilution of 1:200 (under 10x lens).



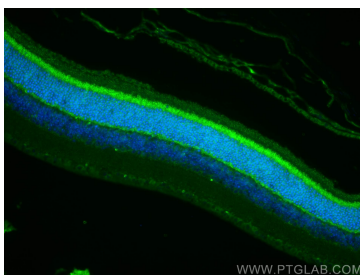
Immunohistochemical analysis of paraffin-embedded human brain tissue slide using 12833-1-AP (Neuropeptide Y antibody at dilution of 1:200 (under 40x lens).



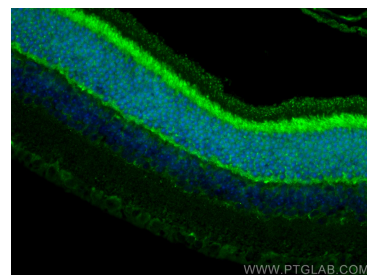
Immunofluorescent analysis of (4% PFA) fixed mouse brain tissue using Neuropeptide Y antibody (12833-1-AP) at dilution of 1:200 and CoraLite®488-Conjugated AffiniPure Goat Anti-Rabbit IgG(H+L).



Immunofluorescent analysis of (4% PFA) fixed mouse brain tissue using Neuropeptide Y antibody (12833-1-AP) at dilution of 1:200 and CoraLite®488-Conjugated AffiniPure Goat Anti-Rabbit IgG(H+L).



Immunofluorescent analysis of (4% PFA) fixed mouse eye tissue using Neuropeptide Y antibody (12833-1-AP) at dilution of 1:200 and CoraLite®488-Conjugated AffiniPure Goat Anti-Rabbit IgG(H+L).



Immunofluorescent analysis of (4% PFA) fixed mouse eye tissue using Neuropeptide Y antibody (12833-1-AP) at dilution of 1:200 and CoraLite®488-Conjugated AffiniPure Goat Anti-Rabbit IgG(H+L).