

For Research Use Only

KDM3A, JMJD1A Polyclonal antibody



Catalog Number: 12835-1-AP

Featured Product

39 Publications

Basic Information

Catalog Number:

12835-1-AP

Size:

150ul, Concentration: 500 µg/ml by Nanodrop;

Source:

Rabbit

Isotype:

IgG

Immunogen Catalog Number:

AG3581

GenBank Accession Number:

BC038297

GeneID (NCBI):

55818

UNIPROT ID:

Q9Y4C1

Full Name:

lysine (K)-specific demethylase 3A

Calculated MW:

150 kDa

Observed MW:

150 kDa

Purification Method:

Antigen affinity purification

Recommended Dilutions:

WB 1:1000-1:4000

IP 0.5-4.0 µg for 1.0-3.0 mg of total protein lysate

IHC 1:20-1:200

IF 1:50-1:500

Applications

Tested Applications:

IF, IHC, IP, WB, ELISA

Cited Applications:

WB, IP, IHC, IF, CoIP, ChIP

Species Specificity:

human

Cited Species:

human, mouse

Note-IHC: suggested antigen retrieval with TE buffer pH 9.0; (*) Alternatively, antigen retrieval may be performed with citrate buffer pH 6.0

Positive Controls:

WB : HeLa cells, MCF-7 cells

IP : HeLa cells,

IHC : human ovary tumor tissue, human kidney tissue, human ovary tissue

IF : HepG2 cells,

Background Information

KDM3A, also name as JMJD1A, JHDM2A, JMJD1, JMJD1A, KIAA0742 and TSGA, belongs to the JHDM2 histone demethylase family. It is a histone demethylase that specifically demethylates 'Lys-9' of histone H3, thereby playing a central role in histone code. It is involved in spermatogenesis by regulating expression of target genes such as PRM1 and TMP1 which are required for packaging and condensation of sperm chromatin. It is involved in obesity resistance through regulation of metabolic genes such as PPARA and UCP1. (PubMed:16603237), JMJD1A is a useful biomarker for hypoxic tumor cells and a prognostic marker that could be a promising therapeutic target against CRC. (PMID:20823141) This antibody recognize the N-term of KDM3A(JMJD1A).

Notable Publications

Author	Pubmed ID	Journal	Application
Rui-Ri Jin	36173030	Histol Histopathol	WB
Min Zhao	34479471	Cell Mol Biol Lett	WB
Biao Huang	31704649	iScience	WB

Storage

Storage:

Store at -20°C. Stable for one year after shipment.

Storage Buffer:

PBS with 0.02% sodium azide and 50% glycerol pH 7.3.

Aliquoting is unnecessary for -20°C storage

*** 20ul sizes contain 0.1% BSA

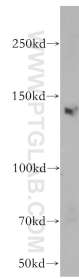
For technical support and original validation data for this product please contact:

T: 1 (888) 4PTGLAB (1-888-478-4522) (toll free in USA), or 1(312) 455-8498 (outside USA)

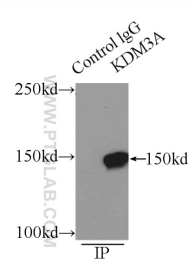
E: proteintech@ptglab.com
W: ptglab.com

This product is exclusively available under Proteintech Group brand and is not available to purchase from any other manufacturer.

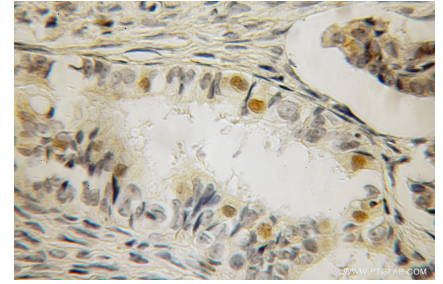
Selected Validation Data



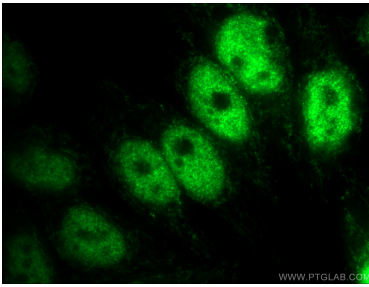
HeLa cells were subjected to SDS PAGE followed by western blot with 12835-1-AP (KDM3A, JMJD1A antibody) at dilution of 1:2000 incubated at room temperature for 1.5 hours.



IP result of anti-KDM3A, JMJD1A (IP: 12835-1-AP, 5ug; Detection: 12835-1-AP 1:1000) with HeLa cells lysate 2500ug.



Immunohistochemical analysis of paraffin-embedded human ovary tumor using 12835-1-AP (KDM3A, JMJD1A antibody) at dilution of 1:100 (under 10x lens).



Immunofluorescent analysis of (4% PFA) fixed HepG2 cells using 12835-1-AP (KDM3A, JMJD1A antibody) at dilution of 1:50 and Alexa Fluor 488-conjugated AffiniPure Goat Anti-Rabbit IgG(H+L).