

For Research Use Only

SMARCD3 Polyclonal antibody

Catalog Number: 12838-1-AP

6 Publications



Basic Information

Catalog Number:

12838-1-AP

Size:

150ul, Concentration: 650 ug/ml by Nanodrop and 367 ug/ml by Bradford method using BSA as the standard;

Source:

Rabbit

Isotype:

IgG

Immunogen Catalog Number:

AG3896

GenBank Accession Number:

BC002628

GeneID (NCBI):

6604

UNIPROT ID:

Q6STE5

Full Name:

SWI/SNF related, matrix associated, actin dependent regulator of chromatin, subfamily d, member 3

Calculated MW:

54 kDa

Observed MW:

54-55 kDa

Purification Method:

Antigen affinity purification

Recommended Dilutions:

WB 1:500-1:3000

IHC 1:200-1:800

IF-P 1:50-1:500

Applications

Tested Applications:

WB, IHC, IF-P, ELISA

Cited Applications:

WB, IHC

Species Specificity:

human, mouse, rat

Cited Species:

human, mouse

Positive Controls:

WB : HeLa cells, BxPC-3 cells, NIH/3T3 cells, C6 cells

IHC : human pancreas cancer tissue,

IF-P : human heart tissue, mouse pancreas tissue

Note-IHC: suggested antigen retrieval with TE buffer pH 9.0; (*) Alternatively, antigen retrieval may be performed with citrate buffer pH 6.0

Background Information

SMARCD3 is a component of the SWI/SNF (mating type switching/sucrose non-fermenting) chromatin remodeling complex, which evolutionarily conserved from yeast to human, and all complexes contain a core set of conserved components, including BRG1/Brm-associated factors (BAFs) and a DNA-dependent SWI2/SNF2-like ATPase, which enables chromatin remodeling. SMARCD3 isoforms bind to several nuclear receptors and transcription factors of various families. SMARCD3 proteins interact in a ligand-independent manner with peroxisome proliferator-activated receptor gamma and enhance its transcriptional activity.

Notable Publications

Author	Pubmed ID	Journal	Application
Wei Zhuo	35597784	Cell Discov	WB
D'Aniello Cristina C	23787002	Cardiovasc Res	WB
Ying Chen	34999540	Transl Oncol	WB

Storage

Storage:

Store at -20°C. Stable for one year after shipment.

Storage Buffer:

PBS with 0.02% sodium azide and 50% glycerol pH 7.3.

Aliquoting is unnecessary for -20°C storage

*** 20ul sizes contain 0.1% BSA

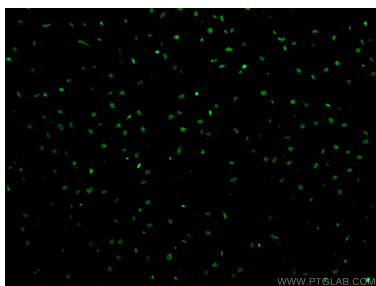
For technical support and original validation data for this product please contact:

T: 1 (888) 4PTGLAB (1-888-478-4522) (toll free in USA), or 1(312) 455-8498 (outside USA)

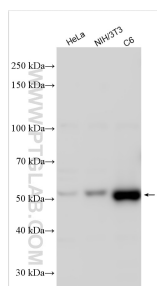
E: proteintech@ptglab.com
W: ptglab.com

This product is exclusively available under Proteintech Group brand and is not available to purchase from any other manufacturer.

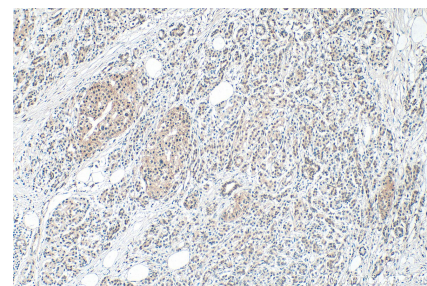
Selected Validation Data



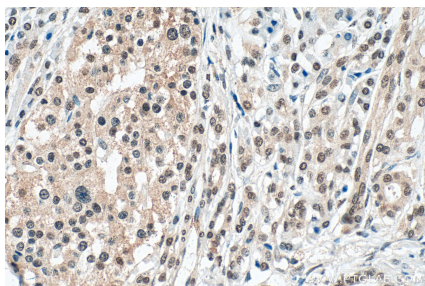
Immunofluorescent analysis of (4% PFA) fixed human heart tissue using 12838-1-AP (SMARCD3 antibody) at dilution of 1:100 and CoraLite488-Conjugated Goat Anti-Rabbit IgG(H+L).



Various lysates were subjected to SDS PAGE followed by western blot with 12838-1-AP (SMARCD3 antibody) at dilution of 1:1500 incubated at room temperature for 1.5 hours.



Immunohistochemical analysis of paraffin-embedded human pancreas cancer tissue slide using 12838-1-AP (SMARCD3 antibody) at dilution of 1:400 (under 10x lens). Heat mediated antigen retrieval with Tris-EDTA buffer (pH 9.0).



Immunohistochemical analysis of paraffin-embedded human pancreas cancer tissue slide using 12838-1-AP (SMARCD3 antibody) at dilution of 1:400 (under 40x lens). Heat mediated antigen retrieval with Tris-EDTA buffer (pH 9.0).