

For Research Use Only

# LGTN Polyclonal antibody

Catalog Number: 12840-1-AP

Featured Product

17 Publications



## Basic Information

### Catalog Number:

12840-1-AP

### Size:

150ul, Concentration: 750 ug/ml by Nanodrop;

### Source:

Rabbit

### Isotype:

IgG

### Immunogen Catalog Number:

AG3579

### GenBank Accession Number:

BC001585

### GeneID (NCBI):

1939

### UNIPROT ID:

P41214

### Full Name:

ligatin

### Calculated MW:

584 aa, 65 kDa

### Observed MW:

70 kDa

### Purification Method:

Antigen affinity purification

### Recommended Dilutions:

WB 1:1000-1:6000

IP 0.5-4.0 ug for 1.0-3.0 mg of total protein lysate

IHC 1:200-1:800

IF/ICC 1:10-1:100

## Applications

### Tested Applications:

WB, IHC, IF/ICC, IP, ELISA

### Cited Applications:

WB, IHC, IF

### Species Specificity:

human, mouse, rat

### Cited Species:

human, mouse, rat, hamster

**Note-IHC: suggested antigen retrieval with TE buffer pH 9.0; (\*) Alternatively, antigen retrieval may be performed with citrate buffer pH 6.0**

### Positive Controls:

WB : HepG2 cells, PC-3 cells

IP : HepG2 cells,

IHC : human intrahepatic cholangiocarcinoma tissue, human stomach tissue

IF/ICC : HepG2 cells,

## Notable Publications

Author	Pubmed ID	Journal	Application
Yoshifumi Sonobe	34654821	Nat Commun	WB
Hagai Marmor-Kollet	33217318	Mol Cell	IF
Shelley R Starck	22745432	Science	WB

## Storage

### Storage:

Store at -20°C. Stable for one year after shipment.

### Storage Buffer:

PBS with 0.02% sodium azide and 50% glycerol pH 7.3.

Aliquoting is unnecessary for -20°C storage

\*\*\* 20ul sizes contain 0.1% BSA

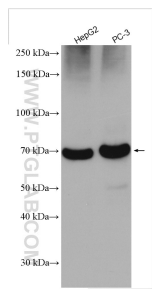
For technical support and original validation data for this product please contact:

T: 1 (888) 4PTGLAB (1-888-478-4522) (toll free in USA), or 1(312) 455-8498 (outside USA)

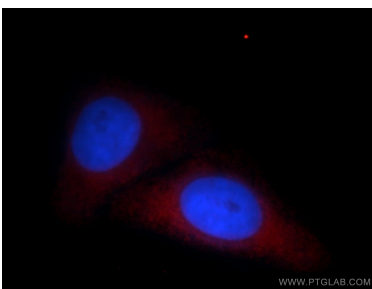
E: [proteintech@ptglab.com](mailto:proteintech@ptglab.com)  
W: [ptglab.com](http://ptglab.com)

This product is exclusively available under Proteintech Group brand and is not available to purchase from any other manufacturer.

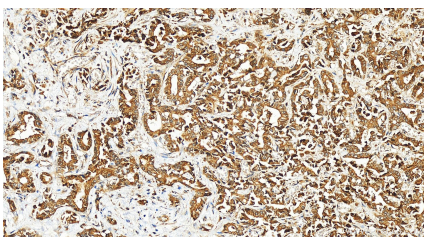
Selected Validation Data



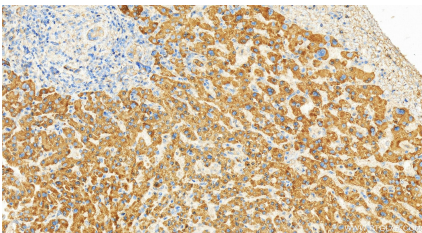
Various lysates were subjected to SDS PAGE followed by western blot with 12840-1-AP (LGTN antibody) at dilution of 1:3000 incubated at room temperature for 1.5 hours.



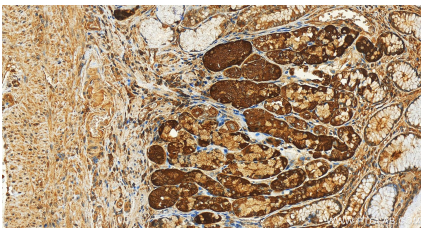
Immunofluorescent analysis of HepG2 cells, using LGTN antibody 12840-1-AP at 1:25 dilution and Rhodamine-labeled goat anti-rabbit IgG (red). Blue pseudocolor = DAPI (fluorescent DNA dye).



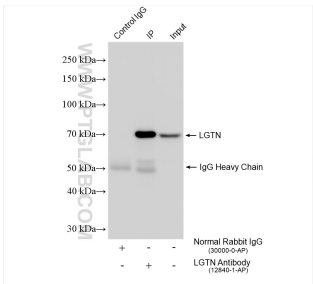
Immunohistochemical analysis of paraffin-embedded human intrahepatic cholangiocarcinoma tissue slide using 12840-1-AP (LGTN antibody) at dilution of 1:400 (under 20x lens). Heat mediated antigen retrieval with Tris-EDTA buffer (pH 9.0).



Immunohistochemical analysis of paraffin-embedded human intrahepatic cholangiocarcinoma tissue slide using 12840-1-AP (LGTN antibody) at dilution of 1:400 (under 20x lens). Heat mediated antigen retrieval with Tris-EDTA buffer (pH 9.0).



Immunohistochemical analysis of paraffin-embedded human normal stomach slide using 12840-1-AP (LGTN antibody) at dilution of 1:400 (under 20x lens). Heat mediated antigen retrieval with Tris-EDTA buffer (pH 9.0).



IP result of anti-LGTN (IP:12840-1-AP, 4ug; Detection:12840-1-AP 1:2000) with HepG2 cells lysate 1320 ug.