

For Research Use Only

# CCL3L1 Polyclonal antibody

Catalog Number: 12859-1-AP



## Basic Information

<b>Catalog Number:</b> 12859-1-AP	<b>GenBank Accession Number:</b> BC027888	<b>Purification Method:</b> Antigen affinity purification
<b>Size:</b> 150ul , Concentration: 550 µg/ml by Nanodrop;	<b>GeneID (NCBI):</b> 6349	<b>Recommended Dilutions:</b> WB 1:500-1:2000
<b>Source:</b> Rabbit	<b>Full Name:</b> chemokine (C-C motif) ligand 3-like 1	
<b>Isotype:</b> IgG	<b>Calculated MW:</b> 10 kDa	
<b>Immunogen Catalog Number:</b> AG3891	<b>Observed MW:</b> 10 kDa	

## Applications

<b>Tested Applications:</b> WB, ELISA	<b>Positive Controls:</b> WB : PMA, LPS and Brefeldin A treated THP-1 cells,
<b>Species Specificity:</b> human	

## Background Information

CCL3L1 is one of several cytokine genes that are clustered on the q-arm of chromosome 17. Cytokines are a family of secreted proteins that function in inflammatory and immunoregulatory processes. The protein encoded by this gene binds to several chemokine receptors, including chemokine binding protein 2 and chemokine (C-C motif) receptor 5 (CCR5). CCR5 is a co-receptor for HIV, and binding of this protein to CCR5 inhibits HIV entry. The copy number of this gene varies among individuals, where most individuals have one to six copies, and a minority of individuals have zero or more than six copies. There are conflicting reports about copy number variation of this gene and its correlation to disease susceptibility.

## Storage

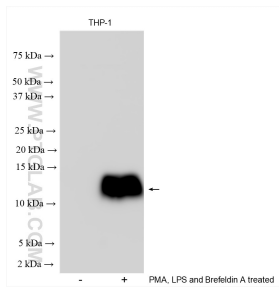
**Storage:**  
Store at -20°C. Stable for one year after shipment.  
**Storage Buffer:**  
PBS with 0.02% sodium azide and 50% glycerol pH 7.3.  
Aliquoting is unnecessary for -20°C storage

\*\*\* 20ul sizes contain 0.1% BSA

For technical support and original validation data for this product please contact:  
T: 1 (888) 4PTGLAB (1-888-478-4522) (toll free in USA), or 1(312) 455-8498 (outside USA)      E: proteintech@ptglab.com  
W: ptglab.com

This product is exclusively available under Proteintech Group brand and is not available to purchase from any other manufacturer.

## Selected Validation Data



PMA, LPS and Brefeldin A treated THP-1 cells were subjected to SDS PAGE followed by western blot with 12859-1-AP (CCL3L1 antibody) at dilution of 1:1000 incubated at room temperature for 1.5 hours.