

For Research Use Only

# RPP38 Polyclonal antibody, PBS Only

Catalog Number:12874-1-PBS



## Basic Information

**Catalog Number:**

12874-1-PBS

**Size:**

100ug , Concentration: 1 mg/ml by Nanodrop;

**Source:**

Rabbit

**Isotype:**

IgG

**Immunogen Catalog Number:**

AG3552

**GenBank Accession Number:**

BC029494

**GeneID (NCBI):**

10557

**UNIPROT ID:**

P78345

**Full Name:**

ribonuclease P/MRP 38kDa subunit

**Calculated MW:**

38 kDa

**Observed MW:**

38 kDa

**Purification Method:**

Antigen affinity purification

## Applications

**Tested Applications:**

WB, IF/ICC, Indirect ELISA

**Species Specificity:**

human, mouse, rat

## Storage

**Storage:**

Store at -80°C.

**Storage Buffer:**

PBS only, pH7.3

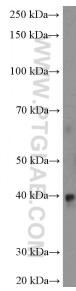
For technical support and original validation data for this product please contact:

T: 1 (888) 4PTGLAB (1-888-478-4522) (toll free in USA), or 1(312) 455-8498 (outside USA)

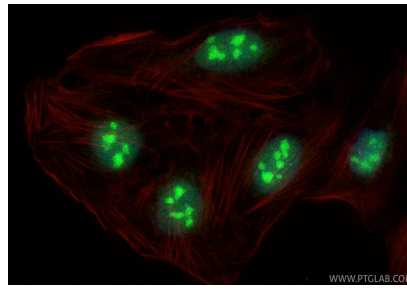
E: [proteintech@ptglab.com](mailto:proteintech@ptglab.com)  
W: [ptglab.com](http://ptglab.com)

This product is exclusively available under Proteintech Group brand and is not available to purchase from any other manufacturer.

## Selected Validation Data



rat kidney tissue were subjected to SDS PAGE followed by western blot with 12874-1-AP (RPP38 Antibody) at dilution of 1:600 incubated at room temperature for 1.5 hours. This data was developed using the same antibody clone with 12874-1-PBS in a different storage buffer formulation.



Immunofluorescent analysis of (4% PFA) fixed U2OS cells using RPP38 antibody (12874-1-AP) at dilution of 1:400 and CoraLite®488-Conjugated Goat Anti-Rabbit IgG(H+L) (SA00013-2), CL594-Phalloidin (red). This data was developed using the same antibody clone with 12874-1-PBS in a different storage buffer formulation.