

For Research Use Only

# PPEF1 Polyclonal antibody

Catalog Number: 12875-1-AP

Featured Product



## Basic Information

<b>Catalog Number:</b> 12875-1-AP	<b>GenBank Accession Number:</b> BC036026	<b>Purification Method:</b> Antigen affinity purification
<b>Size:</b> 150ul , Concentration: 300 µg/ml by Nanodrop and 267 µg/ml by Bradford method using BSA as the standard;	<b>GeneID (NCBI):</b> 5475	<b>Recommended Dilutions:</b> WB 1:500-1:3000 IHC 1:250-1:1000
<b>Source:</b> Rabbit	<b>Full Name:</b> protein phosphatase, EF-hand calcium binding domain 1	
<b>Isotype:</b> IgG	<b>Calculated MW:</b> 653 aa, 76 kDa	
<b>Immunogen Catalog Number:</b> AG3553	<b>Observed MW:</b> 69-76 kDa	

## Applications

**Tested Applications:**

IHC, WB, ELISA

**Species Specificity:**

human, mouse

**Note-IHC: suggested antigen retrieval with TE buffer pH 9.0; (\*) Alternatively, antigen retrieval may be performed with citrate buffer pH 6.0**

**Positive Controls:**

WB : A549 cells, HeLa cells, HEK-293 cells, PC-3 cells

IHC : mouse testis tissue,

## Background Information

### Storage

**Storage:**

Store at -20°C. Stable for one year after shipment.

**Storage Buffer:**

PBS with 0.02% sodium azide and 50% glycerol pH 7.3.

Aliquoting is unnecessary for -20°C storage

\*\*\* 20ul sizes contain 0.1% BSA

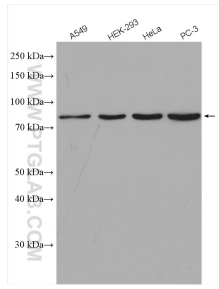
For technical support and original validation data for this product please contact:

T: 1 (888) 4PTGLAB (1-888-478-4522) (toll free in USA), or 1(312) 455-8498 (outside USA)

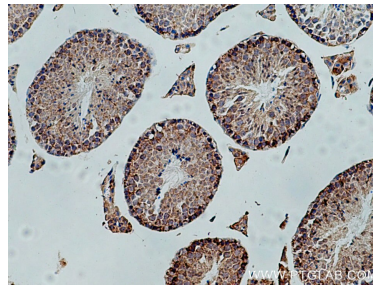
E: proteintech@ptglab.com  
W: ptglab.com

This product is exclusively available under Proteintech Group brand and is not available to purchase from any other manufacturer.

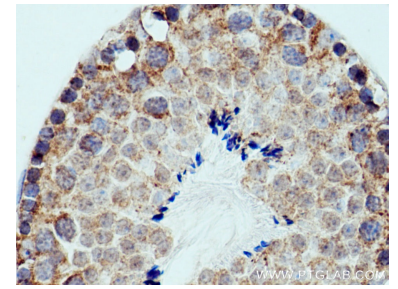
## Selected Validation Data



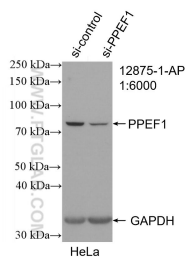
Various lysates were subjected to SDS PAGE followed by western blot with 12875-1-AP (PPEF1 antibody) at dilution of 1:1500 incubated at room temperature for 1.5 hours.



Immunohistochemical analysis of paraffin-embedded mouse testis tissue slide using 12875-1-AP (PPEF1 antibody) at dilution of 1:500 (under 10x lens). Heat mediated antigen retrieval with Tris-EDTA buffer (pH 9.0).



Immunohistochemical analysis of paraffin-embedded mouse testis tissue slide using 12875-1-AP (PPEF1 antibody) at dilution of 1:500 (under 40x lens). Heat mediated antigen retrieval with Tris-EDTA buffer (pH 9.0).



WB result of PPEF1 antibody (12875-1-AP; 1:6000; incubated at room temperature for 1.5 hours) with sh-Control and sh-PPEF1 transfected HeLa cells.