

For Research Use Only

# EAAT4 Polyclonal antibody, PBS Only

Catalog Number:12876-1-PBS



## Basic Information

**Catalog Number:**

12876-1-PBS

**Size:**

100ug , Concentration: 1 mg/ml by Nanodrop;

**Source:**

Rabbit

**Isotype:**

IgG

**Immunogen Catalog Number:**

AG3554

**GenBank Accession Number:**

BC028721

**GeneID (NCBI):**

6511

**UNIPROT ID:**

P48664

**Full Name:**

solute carrier family 1 (high affinity aspartate/glutamate transporter), member 6

**Calculated MW:**

61.6 kDa

**Observed MW:**

60-70 kDa

**Purification Method:**

Antigen affinity purification

## Applications

**Tested Applications:**

WB, IF-Fro, Indirect ELISA

**Species Specificity:**

human, mouse, rat

## Background Information

Excitatory amino acid transporter 4 (EAAT4) is a neuronal glutamate transporter responsible for the reuptake of synaptically released glutamate. The EAAT4 protein is highly enriched in Purkinje cells of the cerebellum, although it is not restricted to these cells (18770868). While the predicted molecular weight of EAAT4 is 62 kDa, considerable heterogeneity in transporter size has been reported in the brain with molecular weights ranging from 50 to 120 kDa as a result of differential glycosylation and/or phosphorylation (24056007). This antibody recognizes 60-70 kDa of EAAT4 in mouse brain and several other lysate.

## Storage

**Storage:**

Store at -80°C.

**Storage Buffer:**

PBS only, pH7.3

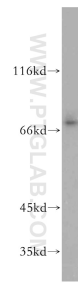
For technical support and original validation data for this product please contact:

T: 1 (888) 4PTGLAB (1-888-478-4522) (toll free in USA), or 1(312) 455-8498 (outside USA)

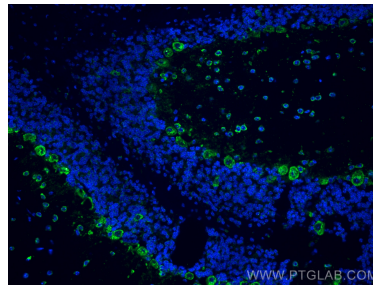
E: [proteintech@ptglab.com](mailto:proteintech@ptglab.com)  
W: [ptglab.com](http://ptglab.com)

**This product is exclusively available under Proteintech Group brand and is not available to purchase from any other manufacturer.**

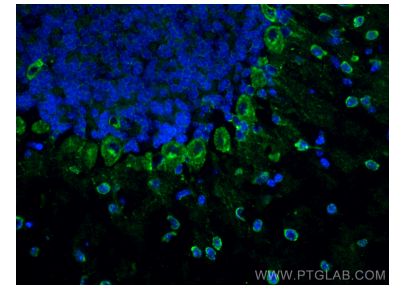
## Selected Validation Data



A375 cells were subjected to SDS PAGE followed by western blot with 12876-1-AP (EAAT4 antibody) at dilution of 1:300 incubated at room temperature for 1.5 hours. This data was developed using the same antibody clone with 12876-1-PBS in a different storage buffer formulation.



Immunofluorescent analysis of (4% PFA) fixed frozen OCT-embedded mouse cerebellum tissue using EAAT4 antibody (12876-1-AP) at dilution of 1:200 and CoraLite®488-Conjugated Goat Anti-Rabbit IgG(H+L) (SA00013-2). This data was developed using the same antibody clone with 12876-1-PBS in a different storage buffer formulation.



Immunofluorescent analysis of (4% PFA) fixed frozen OCT-embedded mouse cerebellum tissue using EAAT4 antibody (12876-1-AP) at dilution of 1:200 and CoraLite®488-Conjugated Goat Anti-Rabbit IgG(H+L) (SA00013-2). This data was developed using the same antibody clone with 12876-1-PBS in a different storage buffer formulation.