

For Research Use Only

SH2D3C Polyclonal antibody

Catalog Number: 12882-1-AP

1 Publications



Basic Information

Catalog Number:

12882-1-AP

Size:

150ul, Concentration: 900 ug/ml by Nanodrop and 333 ug/ml by Bradford method using BSA as the standard;

Source:

Rabbit

Isotype:

IgG

Immunogen Catalog Number:

AG3887

GenBank Accession Number:

BC027962

GeneID (NCBI):

10044

UNIPROT ID:

Q8N5H7

Full Name:

SH2 domain containing 3C

Calculated MW:

94 kDa, 86 kDa, 77 kDa

Observed MW:

77 kDa

Purification Method:

Antigen affinity purification

Recommended Dilutions:

WB 1:500-1:2400

IP 0.5-4.0 ug for 1.0-3.0 mg of total protein lysate

IHC 1:20-1:200

Applications

Tested Applications:

WB, IP, IHC, ELISA

Cited Applications:

WB, IP

Species Specificity:

human, mouse, rat

Cited Species:

rat

Note-IHC: suggested antigen retrieval with TE buffer pH 9.0; (*) Alternatively, antigen retrieval may be performed with citrate buffer pH 6.0

Positive Controls:

WB: HEK-293 cells, human brain tissue, human placenta tissue

IP: mouse brain tissue,

IHC: human breast cancer tissue,

Background Information

SH2 domain-containing protein 3C (SH2D3C, or NSP3) gene encodes an adaptor protein and member of a cytoplasmic protein family involved in cell migration. The encoded protein was identified as an Eph receptor-binding protein which may be a positive regulator of TCR signaling (PMID: 10542222). SH2D3C is an adaptor protein that has been implicated in T cell activation and shown to associate with different components of the integrin signaling pathway ex vivo, moreover, its primary in vivo role of Sh2d3c in regulating B cell development and function has also been demonstrated (PMID: 20505138). SH2D3C has 6 isoforms with MW 94, 86, 77 and 55 kDa (refer to UniProt).

Notable Publications

Author	Pubmed ID	Journal	Application
Fujiya Gomi	29966723	Neuroscience	WB,IP

Storage

Storage:

Store at -20°C. Stable for one year after shipment.

Storage Buffer:

PBS with 0.02% sodium azide and 50% glycerol pH 7.3.

Aliquoting is unnecessary for -20°C storage

*** 20ul sizes contain 0.1% BSA

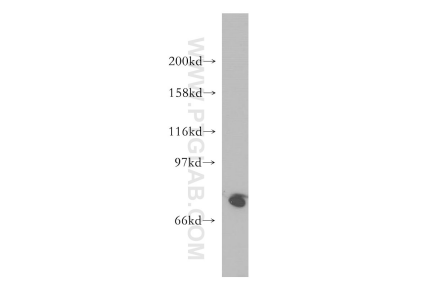
For technical support and original validation data for this product please contact:

T: 1 (888) 4PTGLAB (1-888-478-4522) (toll free in USA), or 1(312) 455-8498 (outside USA)

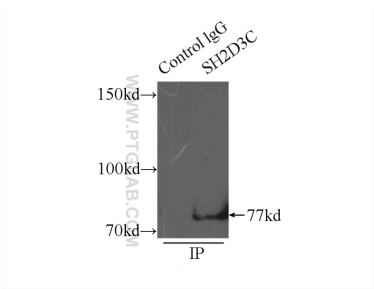
E: proteintech@ptglab.com
W: ptglab.com

This product is exclusively available under Proteintech Group brand and is not available to purchase from any other manufacturer.

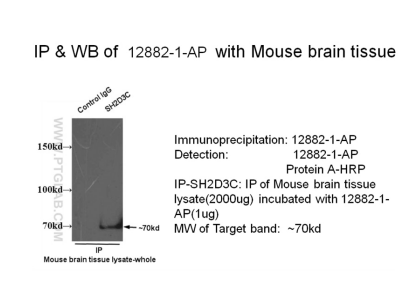
Selected Validation Data



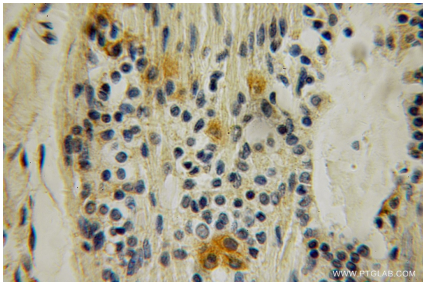
HEK-293 cells were subjected to SDS PAGE followed by western blot with 12882-1-AP (SH2D3C antibody) at dilution of 1:300 incubated at room temperature for 1.5 hours.



IP result of anti-SH2D3C (IP:12882-1-AP, 3ug; Detection:12882-1-AP 1:500) with mouse brain tissue lysate 6000ug.



IP result of SH2D3C antibody (12882-1-AP for IP and Detection) with mouse brain tissue lysate.



Immunohistochemical analysis of paraffin-embedded human breast cancer using 12882-1-AP (SH2D3C antibody) at dilution of 1:100 (under 10x lens).