

GALC Polyclonal antibody

Catalog Number: 12887-1-AP

1 Publications

Basic Information

Catalog Number:

12887-1-AP

Size:

150ul , Concentration: 133 µg/ml by Bradford method using BSA as the standard;

Source:

Rabbit

Isotype:

IgG

Immunogen Catalog Number:

AG3915

GenBank Accession Number:

BC036518

GeneID (NCBI):

2581

UNIPROT ID:

P54803

Full Name:

galactosylceramidase

Calculated MW:

668 aa, 76 kDa

Observed MW:

50 kDa

Purification Method:

Antigen affinity purification

Recommended Dilutions:

WB 1:500-1:1000

Applications

Tested Applications:

WB, ELISA

Cited Applications:

IHC

Species Specificity:

human, mouse, rat

Cited Species:

human

Positive Controls:

WB : A375 cells, HeLa cells, human placenta tissue, mouse brain tissue

Background Information

Galactosylceramidase (Galc) is a lysosomal enzyme involved in the catabolism of galactosylceramide, a major lipid in myelin, kidney, and epithelial cells of the small intestine and colon. The normal GALC mRNA encodes the 80 kDa precursor, which is processed into 50 and 30 kDa subunits. Mutation of GALC gene will lead to Krabbe disease (globoid cell leukodystrophy), an autosomal recessive neurodegenerative disorder that affects both the central and peripheral nervous system due to an enzymatic defect of galactocerebrosidase.

Notable Publications

Author	Pubmed ID	Journal	Application
André Ra Marques	28000364	Chembiochem	IHC

Storage

Storage:

Store at -20°C. Stable for one year after shipment.

Storage Buffer:

PBS with 0.02% sodium azide and 50% glycerol pH 7.3.

Aliquoting is unnecessary for -20°C storage

*** 20ul sizes contain 0.1% BSA

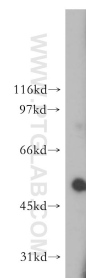
For technical support and original validation data for this product please contact:

T: 1 (888) 4PTGLAB (1-888-478-4522) (toll free in USA), or 1(312) 455-8498 (outside USA)

E: proteintech@ptglab.comW: ptglab.com

This product is exclusively available under Proteintech Group brand and is not available to purchase from any other manufacturer.

Selected Validation Data



A375 cells were subjected to SDS PAGE followed by western blot with 12887-1-AP (GALC antibody) at dilution of 1:3000 incubated at room temperature for 1.5 hours.