

For Research Use Only

NUDT16 Polyclonal antibody

Catalog Number: 12889-1-AP

Featured Product

6 Publications



Basic Information

Catalog Number:

12889-1-AP

Size:

150ul, Concentration: 1100 ug/ml by Nanodrop;

Source:

Rabbit

Isotype:

IgG

Immunogen Catalog Number:

AG3925

GenBank Accession Number:

BC031215

GeneID (NCBI):

131870

UNIPROT ID:

Q96DE0

Full Name:

nudix (nucleoside diphosphate linked moiety X)-type motif 16

Calculated MW:

195 aa, 21 kDa

Observed MW:

21 kDa

Purification Method:

Antigen affinity purification

Recommended Dilutions:

WB 1:1000-1:6000

IP 0.5-4.0 ug for 1.0-3.0 mg of total protein lysate

IHC 1:20-1:200

IF/ICC 1:200-1:800

Applications

Tested Applications:

WB, IHC, IF/ICC, IP, ELISA

Cited Applications:

WB, IHC

Species Specificity:

human

Cited Species:

human

Note-IHC: suggested antigen retrieval with TE buffer pH 9.0; (*) Alternatively, antigen retrieval may be performed with citrate buffer pH 6.0

Positive Controls:

WB : HeLa cells, K-562 cells

IP : HEK-293 cells,

IHC : human kidney tissue,

IF/ICC : HEK-293 cells,

Notable Publications

Author	Pubmed ID	Journal	Application
Lu Wang	36389726	Front Immunol	IHC
Christopher R Neil	34613784	Mol Biol Cell	WB
Siddharth Shukla	25071210	Proc Natl Acad Sci U S A	WB

Storage

Storage:

Store at -20°C. Stable for one year after shipment.

Storage Buffer:

PBS with 0.02% sodium azide and 50% glycerol pH 7.3.

Aliquoting is unnecessary for -20°C storage

*** 20ul sizes contain 0.1% BSA

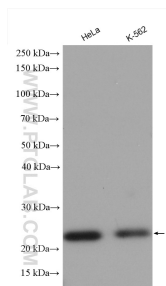
For technical support and original validation data for this product please contact:

T: 1 (888) 4PTGLAB (1-888-478-4522) (toll free in USA), or 1(312) 455-8498 (outside USA)

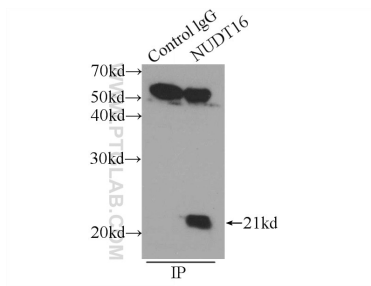
E: proteintech@ptglab.com
W: ptglab.com

This product is exclusively available under Proteintech Group brand and is not available to purchase from any other manufacturer.

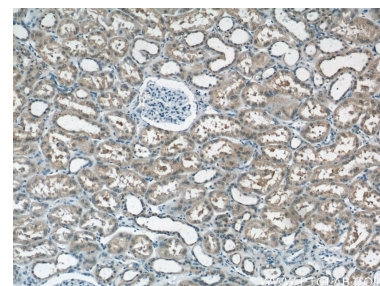
Selected Validation Data



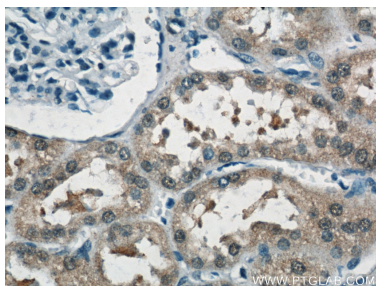
Various lysates were subjected to SDS PAGE followed by western blot with 12889-1-AP (NUDT16 antibody) at dilution of 1:3000 incubated at room temperature for 1.5 hours.



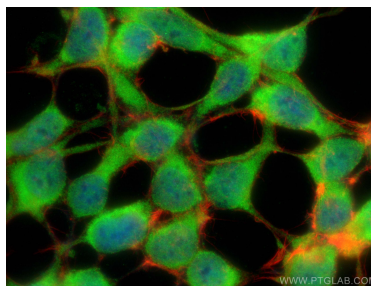
IP result of anti-NUDT16 (IP:12889-1-AP, 3ug; Detection:12889-1-AP 1:1000) with HEK-293 cells lysate 2400ug.



Immunohistochemical analysis of paraffin-embedded human kidney tissue slide using 12889-1-AP (NUDT16 Antibody) at dilution of 1:50 (under 10x lens).



Immunohistochemical analysis of paraffin-embedded human kidney tissue slide using 12889-1-AP (NUDT16 Antibody) at dilution of 1:50 (under 40x lens).



Immunofluorescent analysis of (-20°C Ethanol) fixed HEK-293 cells using NUDT16 antibody (12889-1-AP) at dilution of 1:400 and CoraLite® 488-Conjugated Goat Anti-Rabbit IgG(H+L) (SA00013-2), CL594-phalloidin (red).