

For Research Use Only

# THADA Polyclonal antibody, PBS Only

Catalog Number: 12909-1-PBS

Featured Product



## Basic Information

Catalog Number:

12909-1-PBS

Size:

100ug, Concentration: 1 mg/ml by Nanodrop;

Source:

Rabbit

Isotype:

IgG

Immunogen Catalog Number:

AG3881

GenBank Accession Number:

BC025773

GeneID (NCBI):

63892

UNIPROT ID:

Q6YHU6

Full Name:

thyroid adenoma associated

Calculated MW:

220 kDa

Observed MW:

183 kDa

Purification Method:

Antigen affinity purification

## Applications

Tested Applications:

WB, IHC, IF/ICC, Indirect ELISA

Species Specificity:

human, mouse, rat, hamster

## Storage

Storage:

Store at -80°C.

Storage Buffer:

PBS Only

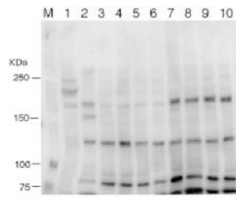
For technical support and original validation data for this product please contact:

T: 1 (888) 4PTGLAB (1-888-478-4522) (toll free in USA), or 1(312) 455-8498 (outside USA)

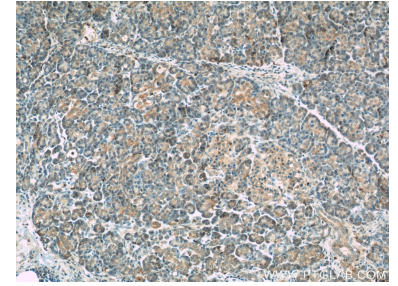
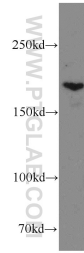
E: [proteintech@ptglab.com](mailto:proteintech@ptglab.com)  
W: [ptglab.com](http://ptglab.com)

This product is exclusively available under Proteintech Group brand and is not available to purchase from any other manufacturer.

## Selected Validation Data



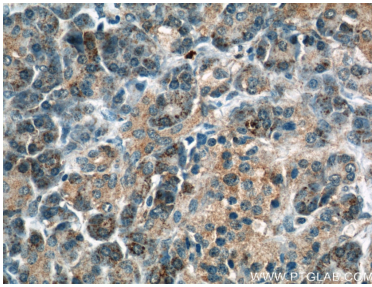
Anti-THADA (12909-1-AP) Western blot analysis. 50µg of lysate of mouse lung (lane 1), EA.hy926 cell (lane 2), CHO cell (lane 3-6), CHO cell transfected human THADA (lane 7-10). M is protein marker.



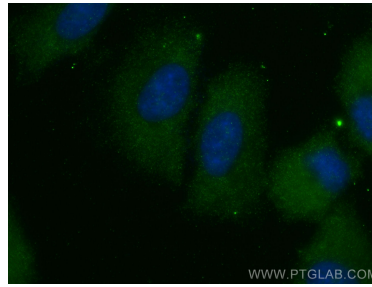
WB result of 12909-1-AP from Takashi Kobayashi. This data was developed using the same antibody clone with 12909-1-PBS in a different storage buffer formulation.

A549 cells were subjected to SDS PAGE followed by western blot with 12909-1-AP (THADA antibody) at dilution of 1:300 incubated at room temperature for 1.5 hours. This data was developed using the same antibody clone with 12909-1-PBS in a different storage buffer formulation.

Immunohistochemical analysis of paraffin-embedded human pancreas using 12909-1-AP (THADA antibody) at dilution of 1:50 (under 10x lens). This data was developed using the same antibody clone with 12909-1-PBS in a different storage buffer formulation.



Immunohistochemical analysis of paraffin-embedded human pancreas using 12909-1-AP (THADA antibody) at dilution of 1:50 (under 40x lens). This data was developed using the same antibody clone with 12909-1-PBS in a different storage buffer formulation.



Immunofluorescent analysis of (-20°C Methanol) fixed A549 cells using THADA antibody (12909-1-AP) at dilution of 1:400 and CoraLite®488-Conjugated AffiniPure Goat Anti-Rabbit IgG(H+L) (SA00013-2). This data was developed using the same antibody clone with 12909-1-PBS in a different storage buffer formulation.