

For Research Use Only

PDE4D Polyclonal antibody

Catalog Number: 12918-1-AP

Featured Product

22 Publications



Basic Information

Catalog Number: 12918-1-AP	GenBank Accession Number: BC036319	Purification Method: Antigen affinity purification
Size: 150ul , Concentration: 650 µg/ml by Nanodrop;	GeneID (NCBI): 5144	Recommended Dilutions: WB 1:1000-1:4000 IHC 1:50-1:500 IF 1:100-1:500
Source: Rabbit	UNIPROT ID: Q08499	
Isotype: IgG	Full Name: phosphodiesterase 4D, cAMP-specific (phosphodiesterase E3 dunce homolog, Drosophila)	
Immunogen Catalog Number: AG3588	Calculated MW: 809 aa, 91 kDa	
	Observed MW: 91 kDa	

Applications

Tested Applications: IF, IHC, WB, ELISA	Positive Controls: WB : K-562 cells, mouse brain tissue, mouse pancreas tissue IHC : mouse colon tissue, IF : HeLa cells,
Cited Applications: IF, IHC, WB	
Species Specificity: human, mouse, rat	
Cited Species: human, rat, mouse, rabbit	

Note-IHC: suggested antigen retrieval with TE buffer pH 9.0; (*) Alternatively, antigen retrieval may be performed with citrate buffer pH 6.0

Background Information

PDE4D(cAMP-specific 3',5'-cyclic phosphodiesterase 4D) is also named as DPDE3, PDE43 and belongs to the cyclic nucleotide phosphodiesterase family and PDE4 subfamily. PDE4D subtype may be of particular importance as an antidepressant target in that it is regulated by repeated treatment with both norepinephrine and serotonin reuptake inhibitors as well as by the PDE4 inhibitor rolipram(PMID:16730340). It has some isoforms and all the PDE4D isoforms are expressed in healthy adult human hippocampus and in hippocampus from a patient with advanced Alzheimer disease(PMID:17353396).

Notable Publications

Author	Pubmed ID	Journal	Application
Keita Tsujimura	26344767	Cell Rep	WB
Fude Liu	31772658	J Cancer	WB
Xiang Tao	34826603	Pharmacol Res	WB

Storage

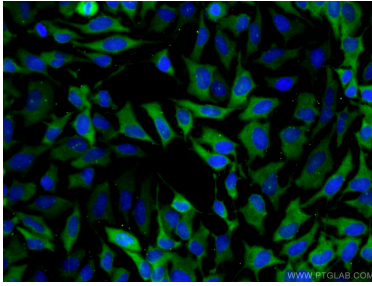
Storage:
Store at -20°C. Stable for one year after shipment.
Storage Buffer:
PBS with 0.02% sodium azide and 50% glycerol pH 7.3.
Aliquoting is unnecessary for -20°C storage

*** 20ul sizes contain 0.1% BSA

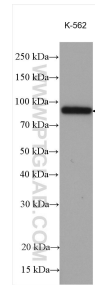
For technical support and original validation data for this product please contact:
T: 1 (888) 4PTGLAB (1-888-478-4522) (toll free in USA), or 1(312) 455-8498 (outside USA)
E: proteintech@ptglab.com
W: ptglab.com

This product is exclusively available under Proteintech Group brand and is not available to purchase from any other manufacturer.

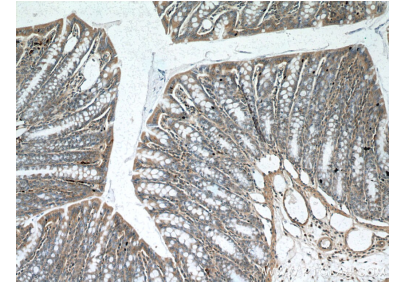
Selected Validation Data



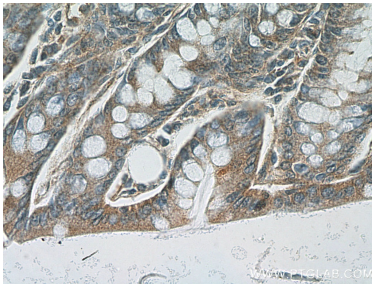
Immunofluorescent analysis of (-20°C Ethanol) fixed HeLa cells using 12918-1-AP (PDE4D antibody) at dilution of 1:100 and CoraLite488-Conjugated AffiniPure Goat Anti-Rabbit IgG(H+L).



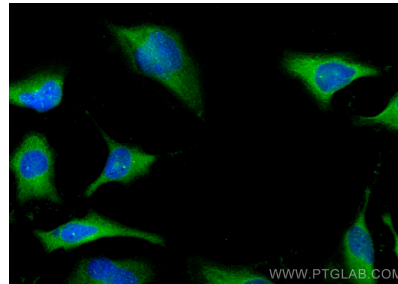
K562 cell lysate were subjected to SDS PAGE followed by western blot with 12918-1-AP (PDE4D antibody) at dilution of 1:2000 incubated at room temperature for 1.5 hours.



Immunohistochemical analysis of paraffin-embedded mouse colon tissue slide using 12918-1-AP (PDE4D Antibody) at dilution of 1:100 (under 10x lens).



Immunohistochemical analysis of paraffin-embedded mouse colon tissue slide using 12918-1-AP (PDE4D Antibody) at dilution of 1:100 (under 40x lens).



Immunofluorescent analysis of (-20°C Methanol) fixed HeLa cells using PDE4D antibody (12918-1-AP) at dilution of 1:200 and CoraLite®488-Conjugated AffiniPure Goat Anti-Rabbit IgG(H+L).