

For Research Use Only

# pan-PKC Polyclonal antibody, PBS Only

Catalog Number: 12919-1-PBS

Featured Product



## Basic Information

**Catalog Number:**

12919-1-PBS

**Size:**

100ug, Concentration: 1 mg/ml by Nanodrop;

**Source:**

Rabbit

**Isotype:**

IgG

**Immunogen Catalog Number:**

AG3591

**GenBank Accession Number:**

BC036472

**GeneID (NCBI):**

5579

**UNIPROT ID:**

P05771

**Full Name:**

protein kinase C, beta

**Calculated MW:**

673 aa, 77 kDa

**Observed MW:**

77 kDa

**Purification Method:**

Antigen affinity purification

## Applications

**Tested Applications:**

WB, IHC, IF, IF/ICC, FC (Intra), IP, Indirect ELISA

**Species Specificity:**

human, mouse, rat, zebrafish

## Background Information

Protein kinase C (PKC) is a family of serine- and threonine-specific protein kinases that can be activated by calcium and second messenger diacylglycerol. Protein kinase Cs (PKCs) are signaling molecules that play key roles in many cellular processes, including secretion, gene expression, proliferation, and muscle contraction. The PKC family is broadly divided into three subgroups: classical, novel, and atypical PKCs. These subgroups differ in both protein sequences and mechanistic requirements for catalytic activity. PKC beta is one of the PKC family members. PKC beta has been reported to be involved in many different cellular functions, such as B cell activation, apoptosis induction, endothelial cell proliferation, and intestinal sugar absorption. Studies in mice also suggest that this kinase may also regulate neuronal functions and correlate fear-induced conflict behavior after stress. This antibody can recognize PKC beta, PKC alpha, PKC gamma, PKC epsilon and PKC delta.

## Storage

**Storage:**

Store at -80°C.

**Storage Buffer:**

PBS only, pH7.3

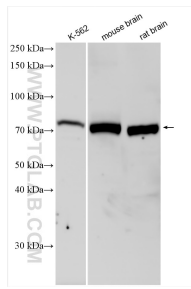
For technical support and original validation data for this product please contact:

T: 1 (888) 4PTGLAB (1-888-478-4522) (toll free in USA), or 1(312) 455-8498 (outside USA)

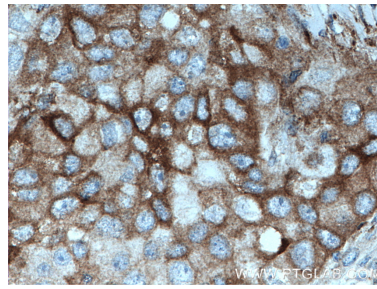
E: [proteintech@ptglab.com](mailto:proteintech@ptglab.com)  
W: [ptglab.com](http://ptglab.com)

**This product is exclusively available under Proteintech Group brand and is not available to purchase from any other manufacturer.**

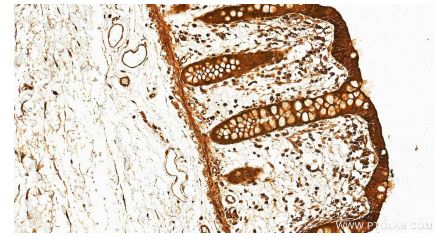
## Selected Validation Data



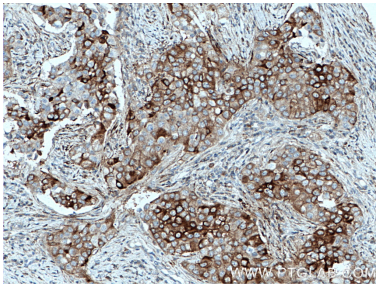
Various lysates were subjected to SDS PAGE followed by western blot with 12919-1-AP (PKC Beta antibody) at dilution of 1:4000 incubated at room temperature for 1.5 hours. This data was developed using the same antibody clone with 12919-1-PBS in a different storage buffer formulation.



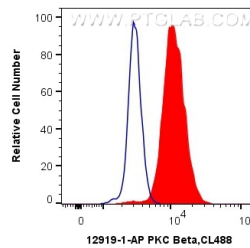
Immunohistochemical analysis of paraffin-embedded human breast cancer tissue slide using 12919-1-AP (PKC beta antibody) at dilution of 1:200 (under 40x lens). This data was developed using the same antibody clone with 12919-1-PBS in a different storage buffer formulation.



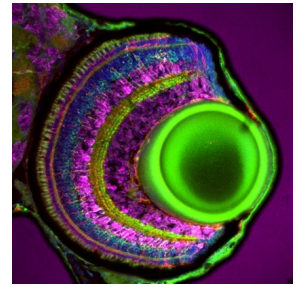
Immunohistochemical analysis of paraffin-embedded human colon tissue slide using 12919-1-AP (pan-PKC antibody) at dilution of 1:400 (under 20x lens). Heat mediated antigen retrieval with Tris-EDTA buffer (pH 9.0). This data was developed using the same antibody clone with 12919-1-PBS in a different storage buffer formulation.



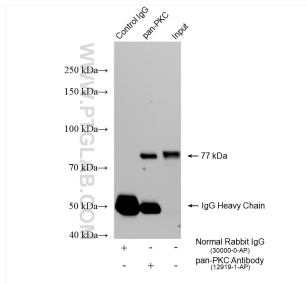
Immunohistochemical analysis of paraffin-embedded human breast cancer tissue slide using 12919-1-AP (PKC beta antibody) at dilution of 1:200 (under 10x lens). This data was developed using the same antibody clone with 12919-1-PBS in a different storage buffer formulation.



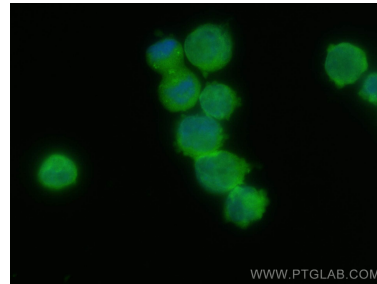
1X10<sup>6</sup> K-562 cells were intracellularly stained with 0.4 ug Anti-Human PKC Beta (12919-1-AP) and Coralite®488-Conjugated AffiniPure Goat Anti-Rabbit IgG(H+L) at dilution 1:1000 (red), or 0.4 ug Control Antibody. Cells were fixed with 4% PFA and permeabilized with Flow Cytometry Perm Buffer. This data was developed using the same antibody clone with 12919-1-PBS in a different storage buffer formulation.



Immunofluorescence analysis of bipolar cells labelled with pan-PKC polyclonal antibody (12919-1-AP, green) on tissue sections of the zebrafish retina at 5 days post fertilisation. Dilution 1:300. Tissue fixed overnight in 4% PFA. Müller glia, red; DAPI, blue; HuC/D, magenta. Data generated by Natalia Jaroszynska in Professor Ryan MacDonald's lab, University College London, UK. This data was developed using the same antibody clone with 12919-1-PBS in a



IP result of anti-pan-PKC (IP:12919-1-AP, 4ug; Detection:12919-1-AP 1:2000) with mouse brain tissue lysate 2100 ug. This data was developed using the same antibody clone with 12919-1-PBS in a different storage buffer formulation.



Immunofluorescent analysis of (4% PFA) fixed K-562 cells using pan-PKC antibody (12919-1-AP) at dilution of 1:400 and Coralite®488-Conjugated AffiniPure Goat Anti-Rabbit IgG(H+L) (SA00013-2). This data was developed using the same antibody clone with 12919-1-PBS in a different storage buffer formulation.