

For Research Use Only

ASF/SF2 Polyclonal antibody

Catalog Number:12929-2-AP

Featured Product

35 Publications



Basic Information

Catalog Number:

12929-2-AP

Size:

150ul , Concentration: 600 ug/ml by Nanodrop;

Source:

Rabbit

Isotype:

IgG

Immunogen Catalog Number:

AG3626

GenBank Accession Number:

BC010264

GeneID (NCBI):

6426

UNIPROT ID:

Q07955

Full Name:

splicing factor, arginine/serine-rich 1

Calculated MW:

248 aa, 28 kDa

Observed MW:

28 kDa

Purification Method:

Antigen affinity purification

Recommended Dilutions:

WB 1:1000-1:9000

IP 0.5-4.0 ug for 1.0-3.0 mg of total protein lysate

IHC 1:50-1:500

IF/ICC 1:50-1:500

Applications

Tested Applications:

WB, IHC, IF/ICC, IP, ELISA

Cited Applications:

WB, IHC, IF, IP, CoIP, RIP

Species Specificity:

human, mouse, rat

Cited Species:

human, mouse, rat, pig

Note-IHC: suggested antigen retrieval with TE buffer pH 9.0; (*) Alternatively, antigen retrieval may be performed with citrate buffer pH 6.0

Positive Controls:

WB : HeLa cells, mouse brain tissue, rat brain tissue

IP : mouse brain tissue,

IHC : human gliomas tissue,

IF/ICC : HeLa cells,

Background Information

SFRS1, also named as ASF, SF2, SF2P33, SFRS1 and ASF-1, belongs to the splicing factor SR family. It plays a role in preventing exon skipping, ensuring the accuracy of splicing and regulating alternative splicing. SFRS1 interacts with other spliceosomal components, via the RS domains, to form a bridge between the 5'- and 3'-splice site binding components, U1 snRNP and U2AF. Isoform ASF-2 and isoform ASF-3 act as splicing repressors. This antibody can recognize all the 3 isoforms(28kd,33kd and 22kd) of SFRS1.

Notable Publications

Author	Pubmed ID	Journal	Application
Yuan Gao	33173749	Adv Sci (Weinh)	WB,RIP
Indranil Malik	34542927	EMBO Mol Med	WB
Ru-Jia Liao	25224648	Clin Exp Pharmacol Physiol	WB

Storage

Storage:

Store at -20°C. Stable for one year after shipment.

Storage Buffer:

PBS with 0.02% sodium azide and 50% glycerol pH 7.3.

Aliquoting is unnecessary for -20°C storage

*** 20ul sizes contain 0.1% BSA

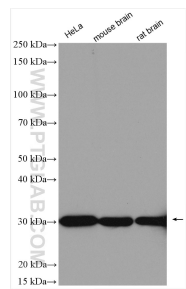
For technical support and original validation data for this product please contact:

T: 1 (888) 4PTGLAB (1-888-478-4522) (toll free in USA), or 1(312) 455-8498 (outside USA)

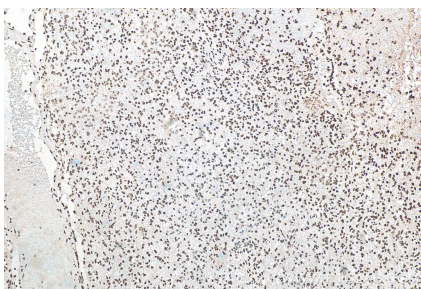
E: proteintech@ptglab.com
W: ptglab.com

This product is exclusively available under Proteintech Group brand and is not available to purchase from any other manufacturer.

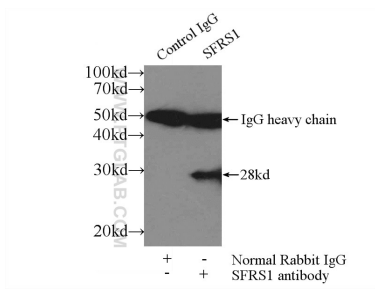
Selected Validation Data



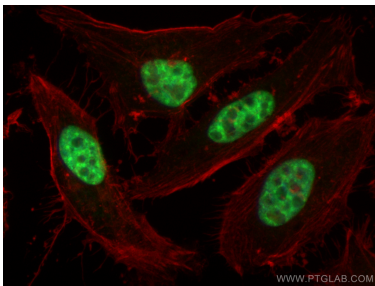
Various lysates were subjected to SDS PAGE followed by western blot with 12929-2-AP (ASF/SF2 antibody) at dilution of 1:4500 incubated at room temperature for 1.5 hours.



Immunohistochemical analysis of paraffin-embedded human gliomas tissue slide using 12929-2-AP (ASF/SF2 antibody) at dilution of 1:200 (under 10x lens). Heat mediated antigen retrieval with Tris-EDTA buffer (pH 9.0).



IP result of anti-ASF/SF2 (IP:12929-2-AP, 3ug; Detection:12929-2-AP 1:500) with mouse brain tissue lysate 3600ug.



Immunofluorescent analysis of (4% PFA) fixed HeLa cells using ASF/SF2 antibody (12929-2-AP) at dilution of 1:200 and CoraLite®488-Conjugated Goat Anti-Rabbit IgG(H+L) (SA00013-2), CL594-Phalloidin (red).