

KCNMB1 Polyclonal antibody

Catalog Number: 12933-1-AP

Basic Information

Catalog Number: 12933-1-AP	GenBank Accession Number: BC025707	Purification Method: Antigen affinity purification
Size: 150ul , Concentration: 400 ug/ml by Nanodrop;	GeneID (NCBI): 3779	Recommended Dilutions: WB 1:500-1:2000
Source: Rabbit	UNIPROT ID: Q16558	
Isotype: IgG	Full Name: potassium large conductance calcium-activated channel, subfamily M, beta member 1	
Immunogen Catalog Number: AG3888	Calculated MW: 130aa,15 kDa; 190aa,22 kDa	
	Observed MW: 31 kDa	

Applications

Tested Applications: WB, ELISA	Positive Controls: WB : mouse brain tissue, mouse skeletal muscle tissue, rat brain tissue, rat skeletal muscle tissue
Species Specificity: human, mouse, rat	

Background Information

Calcium-activated potassium channel subunit beta-1 is a protein encoded by KCNMB1 gene, also named as BK beta1, slo beta1. MaxiK channels are large conductance, voltage and calcium-sensitive potassium channels which are fundamental to the control of smooth muscle tone and neuronal excitability. MaxiK channels can be formed by 2 subunits: the pore-forming alpha subunit and the product of this gene, the modulatory beta subunit. Intracellular calcium regulates the physical association between the alpha and beta subunits. Beta subunits (beta 1-4) are highly tissue specific in their expression, with beta-1 being present predominantly on vascular smooth muscle. Endothelial cells are not known to express beta1, subunits. Beta1, is also known to be expressed in urinary bladder and in some regions of the brain. Association of the beta-1 subunit with the BK channel increases the apparent Ca²⁺ sensitivity of the channel and decreases voltage dependence. PMID 25015960

Storage

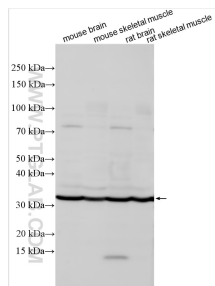
Storage:
Store at -20°C. Stable for one year after shipment.
Storage Buffer:
PBS with 0.02% sodium azide and 50% glycerol pH 7.3.
 Aliquoting is unnecessary for -20°C storage

*** 20ul sizes contain 0.1% BSA

For technical support and original validation data for this product please contact:
 T: 1 (888) 4PTGLAB (1-888-478-4522) (toll free in USA), or 1(312) 455-8498 (outside USA)
 E: proteintech@ptglab.com
 W: ptglab.com

This product is exclusively available under Proteintech Group brand and is not available to purchase from any other manufacturer.

Selected Validation Data



Various lysates were subjected to SDS PAGE followed by western blot with 12933-1-AP (KCNMB1 antibody) at dilution of 1:1000 incubated at room temperature for 1.5 hours.