

For Research Use Only

# PSME2 Polyclonal antibody, PBS Only

Catalog Number: 12937-2-PBS



## Basic Information

**Catalog Number:**

12937-2-PBS

**Size:**

100ug , Concentration: 1 mg/ml by Nanodrop;

**Source:**

Rabbit

**Isotype:**

IgG

**Immunogen Catalog Number:**

AG3986

**GenBank Accession Number:**

BC019885

**GeneID (NCBI):**

5721

**UNIPROT ID:**

Q9UL46

**Full Name:**

proteasome (prosome, macropain) activator subunit 2 (PA28 beta)

**Calculated MW:**

239 aa, 27 kDa

**Observed MW:**

27 kDa

**Purification Method:**

Antigen affinity purification

## Applications

**Tested Applications:**

WB, IHC, IF/ICC, IP, Indirect ELISA

**Species Specificity:**

human, mouse, rat

## Background Information

The principal function of the proteasome is targeted degradation of intracellular proteins. Activity of the 20S proteasome is controlled by regulatory complexes that bind to the ends of the cylindrical proteasome. 11S regulator (REG or PA28), is a complex of 28 kDa subunits that is thought to activate proteasomes toward the production of antigenic peptides. Human PSME1 and PSME2 genes encode the two proteasome activators PA28 alpha and beta, respectively, which have been implicated in antigen processing for loading class I MHC molecules. The PA28 activator complex enhances the generation of class I binding peptides by altering the cleavage pattern of the proteasome.

## Storage

**Storage:**

Store at -80°C.

**Storage Buffer:**

PBS Only

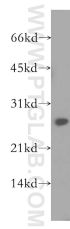
For technical support and original validation data for this product please contact:

T: 1 (888) 4PTGLAB (1-888-478-4522) (toll free in USA), or 1(312) 455-8498 (outside USA)

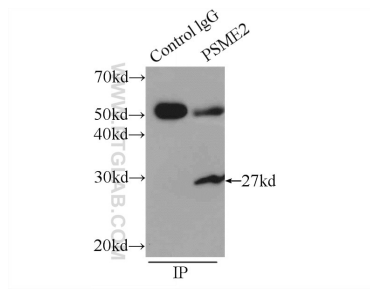
E: [proteintech@ptglab.com](mailto:proteintech@ptglab.com)  
W: [ptglab.com](http://ptglab.com)

This product is exclusively available under Proteintech Group brand and is not available to purchase from any other manufacturer.

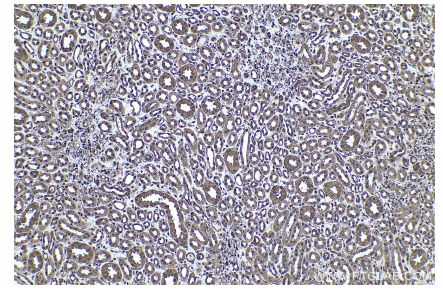
## Selected Validation Data



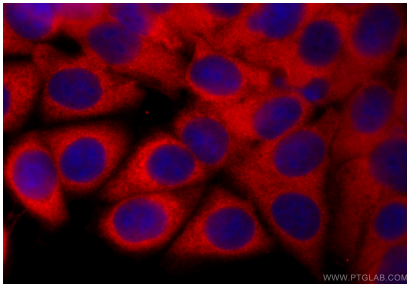
MCF7 cells were subjected to SDS PAGE followed by western blot with 12937-2-AP (PSME2 antibody) at dilution of 1:0 incubated at room temperature for 1.5 hours. This data was developed using the same antibody clone with 12937-2-PBS in a different storage buffer formulation.



IP result of anti-PSME2 (IP:12937-2-AP, 4ug; Detection:12937-2-AP 1:500) with MCF-7 cells lysate 2000ug. This data was developed using the same antibody clone with 12937-2-PBS in a different storage buffer formulation.



Immunohistochemical analysis of paraffin-embedded human kidney tissue slide using 12937-2-AP (PSME2 antibody) at dilution of 1:2000 (under 10x lens). Heat mediated antigen retrieval with Tris-EDTA buffer (pH 9.0). This data was developed using the same antibody clone with 12937-2-PBS in a different storage buffer formulation.



Immunofluorescent analysis of (-20°C Methanol) fixed MCF-7 cells using PSME2 antibody (12937-2-AP) at dilution of 1:400 and CoraLite®594-Conjugated Goat Anti-Rabbit IgG(H+L) (SA00013-4). This data was developed using the same antibody clone with 12937-2-PBS in a different storage buffer formulation.