

For Research Use Only

PSMF1 Polyclonal antibody

Catalog Number: 12941-1-AP

Featured Product

2 Publications



Basic Information

Catalog Number:

12941-1-AP

Size:

150ul, Concentration: 900 ug/ml by Nanodrop and 467 ug/ml by Bradford method using BSA as the standard;

Source:

Rabbit

Isotype:

IgG

Immunogen Catalog Number:

AG4011

GenBank Accession Number:

BC029836

GeneID (NCBI):

9491

UNIPROT ID:

Q92530

Full Name:

proteasome (prosome, macropain) inhibitor subunit 1 (PI31)

Calculated MW:

30 kDa

Observed MW:

30 kDa

Purification Method:

Antigen affinity purification

Recommended Dilutions:

WB 1:500-1:1000

Applications

Tested Applications:

WB, ELISA

Cited Applications:

WB

Species Specificity:

human, mouse, rat

Cited Species:

human, mouse, rat

Positive Controls:

WB: HEK-293 cells, human kidney tissue, human heart tissue, Jurkat cells, Neuro-2a cells

Background Information

PSMF1 is also named as PI31 (proteasome (prosome, macropain) inhibitor subunit 1) and belongs to proteasome inhibitor PI31 family. PI31, which localizes at the nuclear envelope/endoplasmic reticulum membrane, acts as a selective modulator of the proteasome-mediated steps in MHC class I antigen processing (PMID:18495667). PI31 does not inhibit cell-surface transport of glycoproteins in general and it may serve to control immunoproteasome formation and may thereby maintain an intracellular balance between constitutive and immunoproteasomes (PMID:12374861).

Notable Publications

Author	Pubmed ID	Journal	Application
Hongli An	28031328	Mol Cell Biol	WB
Sara Carrillo Roas	39879985	Mol Cell	WB

Storage

Storage:

Store at -20°C. Stable for one year after shipment.

Storage Buffer:

PBS with 0.02% sodium azide and 50% glycerol pH 7.3.

Aliquoting is unnecessary for -20°C storage

*** 20ul sizes contain 0.1% BSA

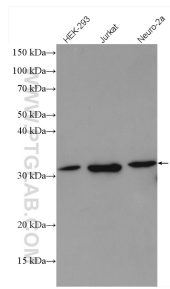
For technical support and original validation data for this product please contact:

T: 1 (888) 4PTGLAB (1-888-478-4522) (toll free in USA), or 1(312) 455-8498 (outside USA)

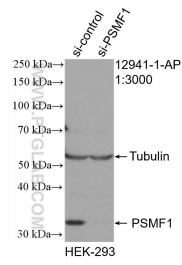
E: proteintech@ptglab.com
W: ptglab.com

This product is exclusively available under Proteintech Group brand and is not available to purchase from any other manufacturer.

Selected Validation Data



Various lysates were subjected to SDS PAGE followed by western blot with 12941-1-AP (PSMF1 antibody) at dilution of 1:500 incubated at room temperature for 1.5 hours.



WB result of PSMF1 antibody (12941-1-AP; 1:3000; incubated at room temperature for 1.5 hours) with sh-Control and sh-PSMF1 transfected HEK-293 cells.