

For Research Use Only

GAGE7 Polyclonal antibody, PBS Only

Catalog Number:12945-1-PBS



Basic Information

Catalog Number:

12945-1-PBS

Size:

100ug, Concentration: 1 mg/ml by Nanodrop;

Source:

Rabbit

Isotype:

IgG

Immunogen Catalog Number:

AG4018

GenBank Accession Number:

BC031628

GeneID (NCBI):

2579

UNIPROT ID:

O76087

Full Name:

G antigen 7

Calculated MW:

13 kDa

Observed MW:

26 kDa

Purification Method:

Antigen affinity purification

Applications

Tested Applications:

WB, IHC, Indirect ELISA

Species Specificity:

human

Background Information

GAGE7 (G Antigen 7), also known as CT4.7 or GAGE-7, is a cancer-testis antigen belonging to the GAGE family. It is predominantly expressed in germ cells of the testis and various tumors, including melanoma, lung, and breast cancers, while remaining silent in normal adult tissues (PMID: 10397259). GAGE7 is an intrinsically disordered protein (IDP) of 117 amino acids with a theoretical molecular weight of ~13 kDa; however, it exhibits an apparent molecular weight of ~26 kDa in SDS-PAGE due to its abnormal electrophoretic mobility (PMID: 23029259).

Storage

Storage:

Store at -80°C.

Storage Buffer:

PBS only, pH7.3

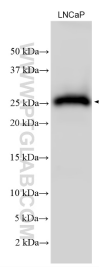
For technical support and original validation data for this product please contact:

T: 1 (888) 4PTGLAB (1-888-478-4522) (toll free in USA), or 1(312) 455-8498 (outside USA)

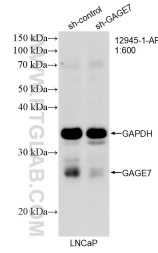
E: proteintech@ptglab.com
W: ptglab.com

This product is exclusively available under Proteintech Group brand and is not available to purchase from any other manufacturer.

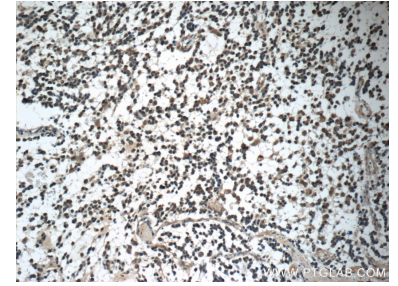
Selected Validation Data



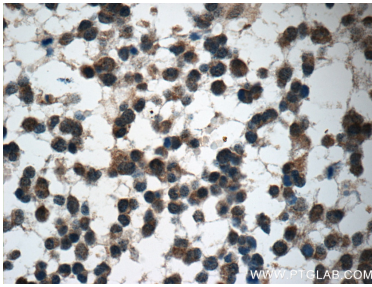
LNCaP cells were subjected to SDS PAGE followed by western blot with 12945-1-AP (GAGE7 antibody) at dilution of 1:500 incubated at room temperature for 1.5 hours. This data was developed using the same antibody clone with 12945-1-PBS in a different storage buffer formulation.



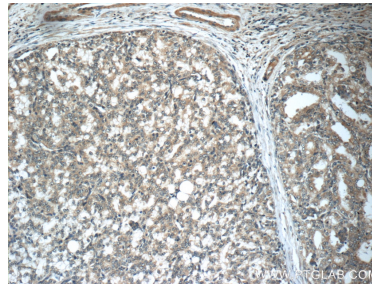
WB result of GAGE7 antibody (12945-1-AP; 1:600; incubated at room temperature for 1.5 hours) with sh-Control and sh-GAGE7 transfected LNCaP cells. This data was developed using the same antibody clone with 12945-1-PBS in a different storage buffer formulation.



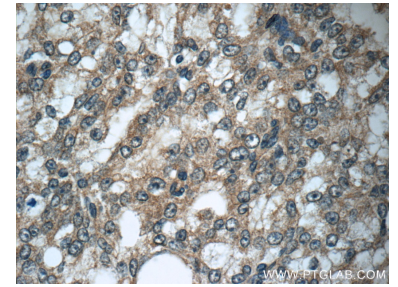
Immunohistochemical analysis of paraffin-embedded human gliomas tissue slide using 12945-1-AP (GAGE7 Antibody) at dilution of 1:50 (under 10x lens). This data was developed using the same antibody clone with 12945-1-PBS in a different storage buffer formulation.



Immunohistochemical analysis of paraffin-embedded human gliomas tissue slide using 12945-1-AP (GAGE7 Antibody) at dilution of 1:50 (under 40x lens). This data was developed using the same antibody clone with 12945-1-PBS in a different storage buffer formulation.



Immunohistochemical analysis of paraffin-embedded human prostate cancer tissue slide using 12945-1-AP (GAGE7 Antibody) at dilution of 1:50 (under 10x lens). This data was developed using the same antibody clone with 12945-1-PBS in a different storage buffer formulation.



Immunohistochemical analysis of paraffin-embedded human prostate cancer tissue slide using 12945-1-AP (GAGE7 Antibody) at dilution of 1:50 (under 40x lens). This data was developed using the same antibody clone with 12945-1-PBS in a different storage buffer formulation.