

IMPDH2 Polyclonal antibody

Catalog Number: 12948-1-AP

Featured Product

49 Publications

Basic Information

Catalog Number:

12948-1-AP

Size:

150ul, Concentration: 500 µg/ml by Nanodrop;

Source:

Rabbit

Isotype:

IgG

Immunogen Catalog Number:

AG3632

GenBank Accession Number:

BC012840

GeneID (NCBI):

3615

Full Name:

IMP (inosine monophosphate) dehydrogenase 2

Calculated MW:

514 aa, 56 kDa

Observed MW:

56 kDa

Purification Method:

Antigen affinity purification

Recommended Dilutions:

WB 1:5000-1:50000

IP 0.5-4.0 µg for 1.0-3.0 mg of total protein lysate

IHC 1:50-1:500

IF 1:200-1:800

Applications

Tested Applications:

IF, IHC, IP, WB, ELISA

Cited Applications:

ELISA, IF, IHC, IP, RIP, WB

Species Specificity:

human, mouse, rat

Cited Species:

human, rat, mouse, zebrafish

Positive Controls:

WB: HeLa cells, rat heart tissue, A549 cells, MCF-7 cells, K-562 cells

IP: HeLa cells,

IHC: human lung cancer tissue,

IF: HeLa cells,

Note-IHC: suggested antigen retrieval with TE buffer pH 9.0; (*) Alternatively, antigen retrieval may be performed with citrate buffer pH 6.0

Background Information

IMPDH2, also named as IMPD2, belongs to the IMPDH/GMPR family. It is a rate limiting enzyme in the de novo synthesis of guanine nucleotides and therefore is involved in the regulation of cell growth. It may also have a role in the development of malignancy and the growth progression of some tumors. IMPDH2 is a key enzyme in the purine nucleotide biosynthetic pathway and constitutes a pivotal biological target for immunosuppressant and antiviral drugs. (PMID:21181270) IMPDH2 is highly enriched in RR(filamentous rods and rings). This antibody may have cross-reaction with IMPDH1 due to the high homology.

Notable Publications

Author	Pubmed ID	Journal	Application
Tai-Wei Li	36177032	Front Immunol	WB
Narges Ahangari	34498062	J Neuropathol Exp Neurol	IF
Shiyu Wang	34673127	Cancer Lett	RIP

Storage

Storage:

Store at -20°C. Stable for one year after shipment.

Storage Buffer:

PBS with 0.02% sodium azide and 50% glycerol pH 7.3.

Aliquoting is unnecessary for -20°C storage

*** 20ul sizes contain 0.1% BSA

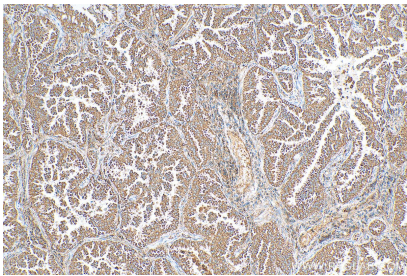
For technical support and original validation data for this product please contact:

T: 1 (888) 4PTGLAB (1-888-478-4522) (toll free in USA), or 1(312) 455-8498 (outside USA)

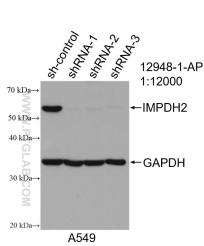
E: proteintech@ptglab.com
W: ptglab.com

This product is exclusively available under Proteintech Group brand and is not available to purchase from any other manufacturer.

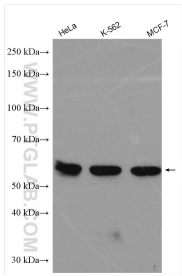
Selected Validation Data



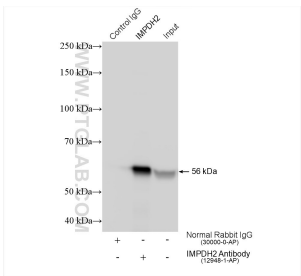
Immunohistochemical analysis of paraffin-embedded human lung cancer tissue slide using 12948-1-AP (IMPDH2 antibody) at dilution of 1:200 (under 10x lens). Heat mediated antigen retrieval with Tris-EDTA buffer (pH 9.0).



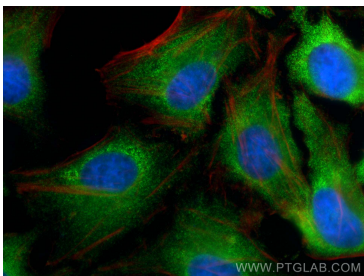
WB result of IMPDH2 antibody (12948-1-AP; 1:12000; incubated at room temperature for 1.5 hours) with sh-Control and sh-IMPDH2 transfected A549 cells.



Various lysates were subjected to SDS PAGE followed by western blot with 12948-1-AP (IMPDH2 antibody) at dilution of 1:18000 incubated at room temperature for 1.5 hours.



IP result of anti-IMPDH2(IP:12948-1-AP, 4ug; Detection:12948-1-AP 1:20000) with HeLa cells lysate 1320 ug.



Immunofluorescent analysis of (4% PFA) fixed HeLa cells using IMPDH2 antibody (12948-1-AP) at dilution of 1:400 and CoraLite®488-Conjugated AffiniPure Goat Anti-Rabbit IgG(H+L), CL594-phalloidin (red).