

For Research Use Only

LIPA Polyclonal antibody

Catalog Number: 12956-1-AP

Featured Product

7 Publications



Basic Information

Catalog Number: 12956-1-AP	GenBank Accession Number: BC012287	Purification Method: Antigen affinity purification
Size: 150ul , Concentration: 300 µg/ml by Nanodrop and 213 µg/ml by Bradford method using BSA as the standard;	GeneID (NCBI): 3988	Recommended Dilutions: WB 1:500-1:2000 IHC 1:50-1:500
Source: Rabbit	Full Name: lipase A, lysosomal acid, cholesterol esterase	
Isotype: IgG	Calculated MW: 399 aa, 45 kDa	
Immunogen Catalog Number: AG3627	Observed MW: 45 kDa	

Applications

Tested Applications: IHC, WB, ELISA	Positive Controls:
Cited Applications: IF, IHC, IP, WB	WB : HT-1080 cells, HeLa cells, HEK-293 cells, HepG2 cells, RAW 264.7 cells, NIH/3T3 cells
Species Specificity: human, mouse, rat	IHC : human colon cancer tissue,
Cited Species: human, rat, mouse	
Note-IHC: suggested antigen retrieval with TE buffer pH 9.0; (*) Alternatively, antigen retrieval may be performed with citrate buffer pH 6.0	

Background Information

Human acid lipase/cholesteryl esterase (LIPA) is a 46-kDa glycoprotein required for the lysosomal hydrolysis of cholesteryl esters and triglycerides that cells acquire through the receptor-mediated endocytosis of low-density lipoproteins (PMID:8432549). Defects in LIPA are the cause of Wolman disease (WOD) (PMID:8146180) and cholesteryl ester storage disease (CESD) (PMID:9633819). It has 2 isoforms produced by alternative splicing with the molecular weight of 45 kDa and 39 kDa. The full length protein has a signal peptide and several glycosylation sites.

Notable Publications

Author	Pubmed ID	Journal	Application
Yangjun Yang	36432597	Nutrients	WB
Simone Carotti	34795230	Cell Death Dis	WB, IHC, IF, IP
Lin An	35679793	Phytomedicine	WB

Storage

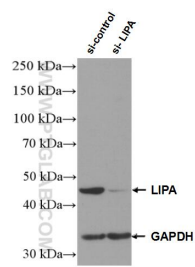
Storage:
Store at -20°C. Stable for one year after shipment.
Storage Buffer:
PBS with 0.02% sodium azide and 50% glycerol pH 7.3.
Aliquoting is unnecessary for -20°C storage

*** 20ul sizes contain 0.1% BSA

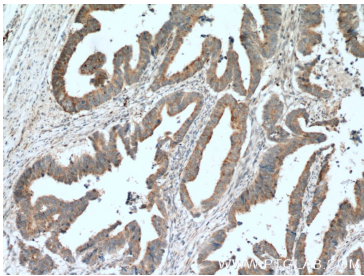
For technical support and original validation data for this product please contact:
T: 1 (888) 4PTGLAB (1-888-478-4522) (toll free in USA), or 1(312) 455-8498 (outside USA)
E: proteintech@ptglab.com
W: ptglab.com

This product is exclusively available under Proteintech Group brand and is not available to purchase from any other manufacturer.

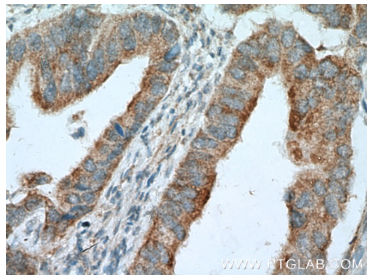
Selected Validation Data



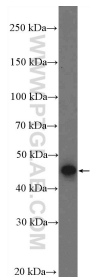
WB result of LIPA antibody (12956-1-AP; 1:1000; incubated at room temperature for 1.5 hours) with sh-Control and sh-LIPA transfected HEK-293 cells.



Immunohistochemical analysis of paraffin-embedded human colon cancer tissue slide using 12956-1-AP (LIPA Antibody) at dilution of 1:200 (under 10x lens). Heat mediated antigen retrieval with Tris-EDTA buffer (pH 9.0).



Immunohistochemical analysis of paraffin-embedded human colon cancer tissue slide using 12956-1-AP (LIPA Antibody) at dilution of 1:200 (under 40x lens). Heat mediated antigen retrieval with Tris-EDTA buffer (pH 9.0).



HT-1080 cells were subjected to SDS PAGE followed by western blot with 12956-1-AP (LIPA Antibody) at dilution of 1:1000 incubated at room temperature for 1.5 hours.