

For Research Use Only

# RASGRF1 Polyclonal antibody

Catalog Number: 12958-1-AP

Featured Product

4 Publications



## Basic Information

### Catalog Number:

12958-1-AP

### Size:

150ul, Concentration: 220 ug/ml by Nanodrop and 213 ug/ml by Bradford method using BSA as the standard;

### Source:

Rabbit

### Isotype:

IgG

### Immunogen Catalog Number:

AG4072

### GenBank Accession Number:

BC040275

### GeneID (NCBI):

5923

### UNIPROT ID:

Q13972

### Full Name:

Ras protein-specific guanine nucleotide-releasing factor 1

### Calculated MW:

134 kDa

### Observed MW:

130-140 kDa

### Purification Method:

Antigen affinity purification

### Recommended Dilutions:

WB 1:500-1:1000

IP 0.5-4.0 ug for 1.0-3.0 mg of total protein lysate

IHC 1:50-1:500

## Applications

### Tested Applications:

WB, IHC, IP, ELISA

### Cited Applications:

WB, IHC

### Species Specificity:

mouse, rat

### Cited Species:

mouse, rat

### Positive Controls:

WB: rat brain tissue,

IP: rat brain tissue,

IHC: rat brain tissue, mouse brain tissue

**Note-IHC: suggested antigen retrieval with TE buffer pH 9.0; (\*) Alternatively, antigen retrieval may be performed with citrate buffer pH 6.0**

## Background Information

RASGRF1, a member of calmodulin-activated guanine-nucleotide exchange factors (GEFs), highly expressed at the synaptic junctions of the central nervous system (CNS). It is similar to the *Saccharomyces cerevisiae* CDC25. RASGRF1 serves as an in vivo activator for H-RAS and members of the R-RAS and RAC subfamilies. Several studies have shown that RasGRF1 also binds to microtubules and participate in the regulation of neurite outgrowth. RasGRF1 has been implicated in neuronal excitability. The studies of the similar gene in mouse suggested that the Ras-GEF activity of this protein in brain can be activated by Ca<sup>2+</sup> influx, muscarinic receptors, and G protein beta-gamma subunit. Mouse studies also indicated that the Ras-GEF signaling pathway mediated by this protein may be important for long-term memory.

## Notable Publications

Author	Pubmed ID	Journal	Application
Wei Liao	24597981	Leuk Lymphoma	
Jie Wei	28657734	J Agric Food Chem	WB
Xuening Pang	39369670	Biomaterials	WB

## Storage

### Storage:

Store at -20°C. Stable for one year after shipment.

### Storage Buffer:

PBS with 0.02% sodium azide and 50% glycerol, pH7.3

Aliquoting is unnecessary for -20°C storage

\*\*\* 20ul sizes contain 0.1% BSA

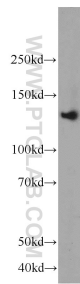
For technical support and original validation data for this product please contact:

T: 1 (888) 4PTGLAB (1-888-478-4522) (toll free in USA), or 1(312) 455-8498 (outside USA)

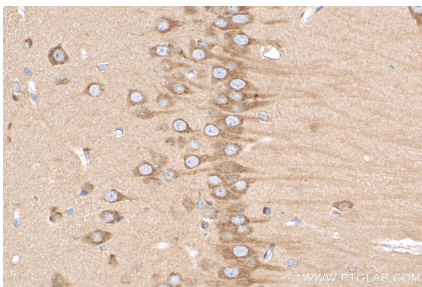
E: [proteintech@ptglab.com](mailto:proteintech@ptglab.com)  
W: [ptglab.com](http://ptglab.com)

This product is exclusively available under Proteintech Group brand and is not available to purchase from any other manufacturer.

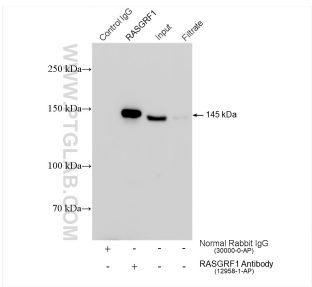
Selected Validation Data



rat brain tissue were subjected to SDS PAGE followed by western blot with 12958-1-AP (RASGRF1 antibody) at dilution of 1:600 incubated at room temperature for 1.5 hours.



Immunohistochemical analysis of paraffin-embedded rat brain tissue slide using 12958-1-AP (RASGRF1 antibody) at dilution of 1:200 (under 40x lens). Heat mediated antigen retrieval with Tris-EDTA buffer (pH 9.0).



IP result of anti-RASGRF1 (IP:12958-1-AP, 4ug; Detection:12958-1-AP 1:600) with rat brain tissue lysate 1120 ug.