

For Research Use Only

CHAD Polyclonal antibody

Catalog Number: 12963-1-AP **1 Publications**



Basic Information

Catalog Number: 12963-1-AP	GenBank Accession Number: BC036360	Purification Method: Antigen affinity purification
Size: 150ul , Concentration: 153 µg/ml by Nanodrop and 153 µg/ml by Bradford method using BSA as the standard;	GeneID (NCBI): 1101	Recommended Dilutions: WB 1:500-1:1000
Source: Rabbit	Full Name: chondroadherin	
Isotype: IgG	Calculated MW: 359 aa, 40.5 kDa	
Immunogen Catalog Number: AG4077	Observed MW: 41 kDa	

Applications

Tested Applications: WB, ELISA	Positive Controls: WB : HeLa cells, MCF-7 cells, Jurkat cells
Cited Applications: WB	
Species Specificity: human, mouse, rat	
Cited Species: human	

Background Information

Chondroadherin (CHAD), also known as cartilage leucine-rich protein, is a prominent noncollagenous extracellular protein in cartilage. It was first isolated from bovine cartilage. The primary structure of CHAD shows that it belongs to the family of leucine-rich repeat (LRR) proteins. It is expressed at high levels in certain zones of cartilage and also has been detected in bone, tendon, bone marrow, and chondrosarcoma cells. CHAD promotes attachment of chondrocytes, fibroblasts, and osteoblasts, mediated via the integrin alpha2beta1. It has also been shown to bind to collagen type II and both collagen type II and chondroadherin interact with integrin alpha2beta1. Besides, CHAD may play an important role in the regulation of chondrocyte growth and proliferation.

Notable Publications

Author	Pubmed ID	Journal	Application
Bing Xin	33125687	Reprod Sci	WB

Storage

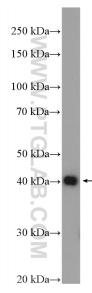
Storage:
Store at -20°C. Stable for one year after shipment.
Storage Buffer:
PBS with 0.02% sodium azide and 50% glycerol pH 7.3.
Aliquoting is unnecessary for -20°C storage

*** 20ul sizes contain 0.1% BSA

For technical support and original validation data for this product please contact:
T: 1 (888) 4PTGLAB (1-888-478-4522) (toll free in USA), or 1(312) 455-8498 (outside USA) E: proteintech@ptglab.com W: ptglab.com

This product is exclusively available under Proteintech Group brand and is not available to purchase from any other manufacturer.

Selected Validation Data



HeLa cells were subjected to SDS PAGE followed by western blot with 12963-1-AP (CHAD antibody) at dilution of 1:600 incubated at room temperature for 1.5 hours.