

For Research Use Only

ACP6 Polyclonal antibody

Catalog Number: 12965-1-AP



Basic Information

Catalog Number: 12965-1-AP	GenBank Accession Number: BC034686	Purification Method: Antigen affinity purification
Size: 150ul , Concentration: 180 µg/ml by Nanodrop and 153 µg/ml by Bradford method using BSA as the standard;	GeneID (NCBI): 51205	Recommended Dilutions: WB 1:500-1:1000 IHC 1:20-1:200
Source: Rabbit	Full Name: acid phosphatase 6, lysophosphatidic	
Isotype: IgG	Calculated MW: 428 aa, 49 kDa	
Immunogen Catalog Number: AG3633	Observed MW: 49 kDa	

Applications

Tested Applications: IHC, WB, ELISA	Positive Controls:
Species Specificity: human, mouse	WB : human liver tissue, mouse liver tissue
Note-IHC: suggested antigen retrieval with TE buffer pH 9.0; (*) Alternatively, antigen retrieval may be performed with citrate buffer pH 6.0	IHC : human prostate cancer tissue,

Background Information

Storage

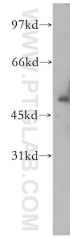
Storage:
Store at -20°C. Stable for one year after shipment.
Storage Buffer:
PBS with 0.02% sodium azide and 50% glycerol pH 7.3.
Aliquoting is unnecessary for -20°C storage

*** 20ul sizes contain 0.1% BSA

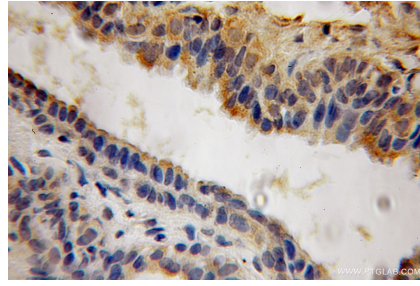
For technical support and original validation data for this product please contact:
T: 1 (888) 4PTGLAB (1-888-478-4522) (toll free in USA), or 1(312) 455-8498 (outside USA) E: proteintech@ptglab.com
W: ptglab.com

This product is exclusively available under Proteintech Group brand and is not available to purchase from any other manufacturer.

Selected Validation Data



human liver tissue were subjected to SDS PAGE followed by western blot with 12965-1-AP (ACP6 antibody) at dilution of 1:300 incubated at room temperature for 1.5 hours.



Immunohistochemical analysis of paraffin-embedded human prostate cancer using 12965-1-AP (ACP6 antibody) at dilution of 1:100 (under 10x lens).